

## GRAF Rabbit mAb

Catalog No: #57018

Package Size: #57018-1 50ul #57018-2 100ul

Orders: order@signalwayantibody.com

Support: tech@signalwayantibody.com

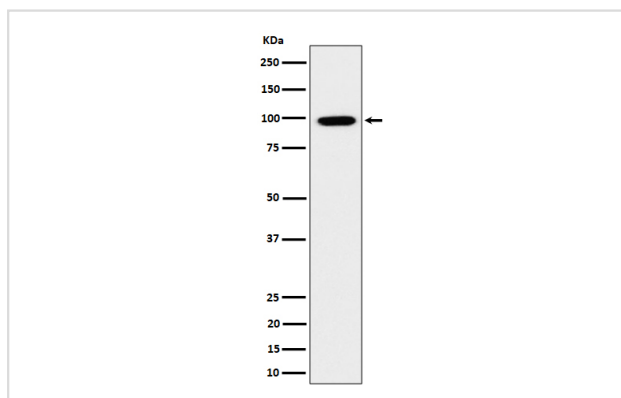
## Description

Product Name	GRAF Rabbit mAb
Host Species	Rabbit
Clonality	Monoclonal
Isotype	Rabbit IgG
Purification	Affinity-chromatography
Applications	WB IHC
Species Reactivity	Human Mouse Rat
Specificity	GRAF Antibody detects endogenous levels of total GRAF
Immunogen Description	A synthesized peptide derived from human GRAF
Other Names	GRAF; GRAF1; OPHN1L; OPHN1L1;
Accession No.	Uniprot:Q9UNA1
Uniprot	Q9UNA1
Calculated MW	100kDa
Formulation	Rabbit IgG in phosphate buffered saline , pH 7.4, 150mM NaCl, 0.02% sodium azide and 50% glycerol.
Storage	Store at +4 $\Lambda$ C short term. Store at -20 $\Lambda$ C long term. Avoid freeze / thaw cycle.

## Application Details

WB: 1:500~1:2000 IHC: 1:50~1:200

## Images



Western blot analysis of GRAF expression in HeLa cell lysate.

## Product Description

GTPase-activating protein for RHOA and CDC42.

---

Note: This product is for in vitro research use only