

ADH4 Rabbit mAb

Catalog No: #57019

Package Size: #57019-1 50ul #57019-2 100ul

Orders: order@signalwayantibody.com

Support: tech@signalwayantibody.com

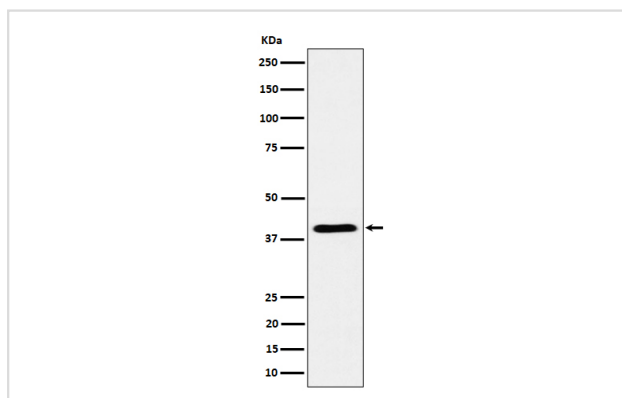
Description

Product Name	ADH4 Rabbit mAb
Host Species	Rabbit
Clonality	Monoclonal
Isotype	Rabbit IgG
Purification	Affinity-chromatography
Applications	WB IHC ICC/IF
Species Reactivity	Human
Specificity	ADH4 Antibody detects endogenous levels of total ADH4
Immunogen Description	A synthesized peptide derived from human ADH4
Other Names	ADH2; Adh4; Alcohol dehydrogenase 4;
Accession No.	Uniprot:P08319
Uniprot	P08319
Calculated MW	37kDa
Formulation	Rabbit IgG in phosphate buffered saline , pH 7.4, 150mM NaCl, 0.02% sodium azide and 50% glycerol.
Storage	Store at +4 Λ C short term. Store at -20 Λ C long term. Avoid freeze / thaw cycle.

Application Details

WB:1:500~1:2000IHC:1:50~1:200ICC/IF:1:50~1:200

Images



Western blot analysis of ADH4 expression in human liver cell lysate.

Product Description

Belongs to the zinc-containing alcohol dehydrogenase family. Class-II subfamily.

Note: This product is for in vitro research use only