

Somatostatin Receptor 1 Rabbit mAb

Catalog No: #57021

Package Size: #57021-1 50ul #57021-2 100ul

Orders: order@signalwayantibody.com

Support: tech@signalwayantibody.com

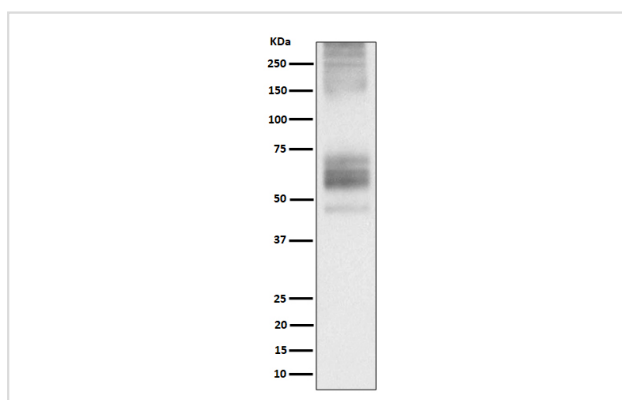
Description

Product Name	Somatostatin Receptor 1 Rabbit mAb
Host Species	Rabbit
Clonality	Monoclonal
Isotype	Rabbit IgG
Purification	Affinity-chromatography
Applications	WB ICC/IF
Species Reactivity	Human
Specificity	Somatostatin Receptor 1 Antibody detects endogenous levels of total Somatostatin Receptor 1
Immunogen Description	A synthesized peptide derived from human Somatostatin Receptor 1
Other Names	Somatostatin R1; SRIF2; SS1R; Sstr1;
Accession No.	Uniprot:P30872
Uniprot	P30872
Calculated MW	60kDa
Formulation	Rabbit IgG in phosphate buffered saline , pH 7.4, 150mM NaCl, 0.02% sodium azide and 50% glycerol.
Storage	Store at +4Λ C short term. Store at -20Λ C long term. Avoid freeze / thaw cycle.

Application Details

WB: 1:500~1:2000 ICC/IF: 1:50~1:200

Images



Western blot analysis of Somatostatin Receptor 1 expression in 293T transfected with Somatostatin Receptor 1 cell lysate.

Product Description

Receptor for somatostatin with higher affinity for somatostatin-14 than -28. This receptor is coupled via pertussis toxin sensitive G proteins to inhibition of adenylyl cyclase.

Note: This product is for in vitro research use only