

## Kallikrein 8 Rabbit mAb

Catalog No: #57027

Package Size: #57027-1 50ul #57027-2 100ul

Orders: order@signalwayantibody.com

Support: tech@signalwayantibody.com

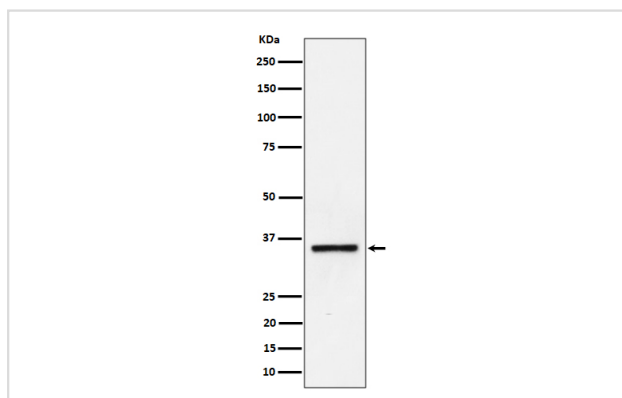
## Description

Product Name	Kallikrein 8 Rabbit mAb
Host Species	Rabbit
Clonality	Monoclonal
Isotype	Rabbit IgG
Purification	Affinity-chromatography
Applications	WB IHC
Species Reactivity	Human
Specificity	Kallikrein 8 Antibody detects endogenous levels of total Kallikrein 8
Immunogen Description	A synthesized peptide derived from human Kallikrein 8
Other Names	BSP1; hK8; HNP; HPN; Kallikrein8; Kik8; NRPN; PRSS19; TADG14; UNQ283;
Accession No.	Uniprot:O60259
Uniprot	O60259
Calculated MW	35kDa
Formulation	Rabbit IgG in phosphate buffered saline , pH 7.4, 150mM NaCl, 0.02% sodium azide and 50% glycerol.
Storage	Store at +4 $\Lambda$ C short term. Store at -20 $\Lambda$ C long term. Avoid freeze / thaw cycle.

## Application Details

WB:1:500~1:2000IHC:1:50~1:200

## Images



Western blot analysis of Kallikrein 8 expression in Jurkat cell lysate.

## Product Description

Serine protease which is capable of degrading a number of proteins such as casein, fibrinogen, kininogen, fibronectin and collagen type IV. Also cleaves L1CAM in response to increased neural activity.

---

Note: This product is for in vitro research use only