

## ENPP5 Rabbit mAb

Catalog No: #57029

Package Size: #57029-1 50ul #57029-2 100ul

Orders: order@signalwayantibody.com

Support: tech@signalwayantibody.com

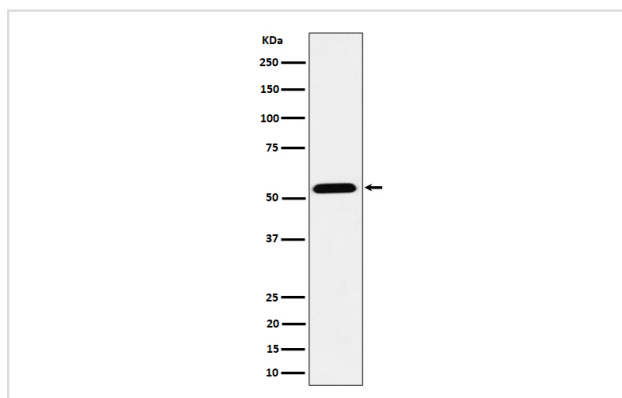
## Description

Product Name	ENPP5 Rabbit mAb
Host Species	Rabbit
Clonality	Monoclonal
Isotype	Rabbit IgG
Purification	Affinity-chromatography
Applications	WB ICC/IF
Species Reactivity	Human Mouse Rat
Specificity	ENPP5 Antibody detects endogenous levels of total ENPP5
Immunogen Description	A synthesized peptide derived from human ENPP5
Other Names	ENPP5;
Accession No.	Uniprot:Q9UJA9
Uniprot	Q9UJA9
Calculated MW	55kDa
Formulation	Rabbit IgG in phosphate buffered saline , pH 7.4, 150mM NaCl, 0.02% sodium azide and 50% glycerol.
Storage	Store at +4Λ C short term. Store at -20Λ C long term. Avoid freeze / thaw cycle.

## Application Details

WB: 1:500~1:2000 ICC/IF: 1:50~1:200

## Images



Western blot analysis of ENPP5 expression in MCF7 cell lysate.

## Product Description

May play a role in neuronal cell communication. Lacks nucleotide pyrophosphatase and lysopholipase D activity.

---

Note: This product is for in vitro research use only