

## TOE1 Rabbit mAb

Catalog No: #57030

Package Size: #57030-1 50ul #57030-2 100ul

Orders: order@signalwayantibody.com

Support: tech@signalwayantibody.com

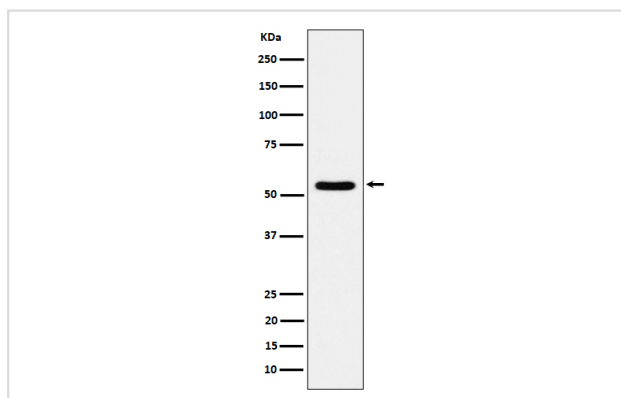
## Description

Product Name	TOE1 Rabbit mAb
Host Species	Rabbit
Clonality	Monoclonal
Isotype	Rabbit IgG
Purification	Affinity-chromatography
Applications	WB
Species Reactivity	Human
Specificity	TOE1 Antibody detects endogenous levels of total TOE1
Immunogen Description	A synthesized peptide derived from human TOE1
Other Names	Toe1;
Accession No.	Uniprot:Q96GM8
Uniprot	Q96GM8
Calculated MW	60kDa
Formulation	Rabbit IgG in phosphate buffered saline , pH 7.4, 150mM NaCl, 0.02% sodium azide and 50% glycerol.
Storage	Store at +4Λ C short term. Store at -20Λ C long term. Avoid freeze / thaw cycle.

## Application Details

WB: 1:500~1:2000

## Images



Western blot analysis of TOE1 expression in 293T cell lysate.

## Product Description

Inhibits cell growth rate and cell cycle. Induces CDKN1A expression as well as TGF-beta expression. Mediates the inhibitory growth effect of EGR1.

---

Note: This product is for in vitro research use only