

CCDC98 Rabbit mAb

Catalog No: #57034

Package Size: #57034-1 50ul #57034-2 100ul

Orders: order@signalwayantibody.com

Support: tech@signalwayantibody.com

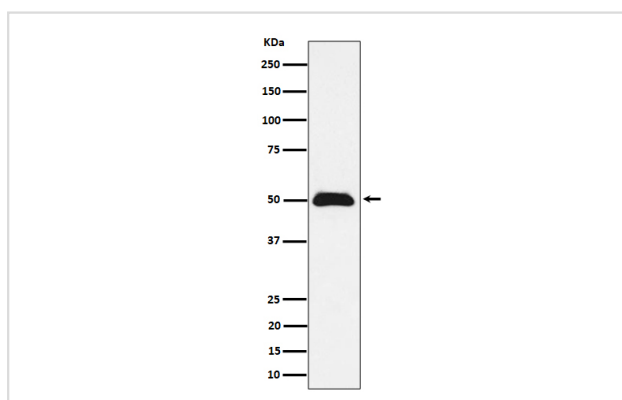
Description

Product Name	CCDC98 Rabbit mAb
Host Species	Rabbit
Clonality	Monoclonal
Isotype	Rabbit IgG
Purification	Affinity-chromatography
Applications	WB ICC/IF IP FC
Species Reactivity	Human
Specificity	CCDC98 Antibody detects endogenous levels of total CCDC98
Immunogen Description	A synthesized peptide derived from human CCDC98
Other Names	ABRA1; ABRAXAS; FAM175A;
Accession No.	Uniprot:Q6UWZ7
Uniprot	Q6UWZ7
Calculated MW	50kDa
Formulation	Rabbit IgG in phosphate buffered saline , pH 7.4, 150mM NaCl, 0.02% sodium azide and 50% glycerol.
Storage	Store at +4 Λ C short term. Store at -20 Λ C long term. Avoid freeze / thaw cycle.

Application Details

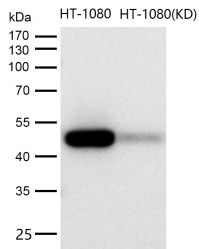
WB: 1:500~1:2000 ICC/IF: 1:50~1:200 IP: 1:50 FC: 1:50

Images



Western blot analysis of CCDC98 expression in MCF7 cell lysate.

All lanes use the Antibody at 1:1K dilution for 1 hour at room temperature.



Product Description

Component of the BRCA1-A complex, a complex that specifically recognizes 'Lys-63'-linked ubiquitinated histones H2A and H2AX at DNA lesions sites, leading to target the BRCA1-BARD1 heterodimer to sites of DNA damage at double-strand breaks (DSBs).

Note: This product is for in vitro research use only