

Sterol carrier protein 2 Rabbit mAb

Catalog No: #57036

Package Size: #57036-1 50ul #57036-2 100ul

Orders: order@signalwayantibody.com

Support: tech@signalwayantibody.com

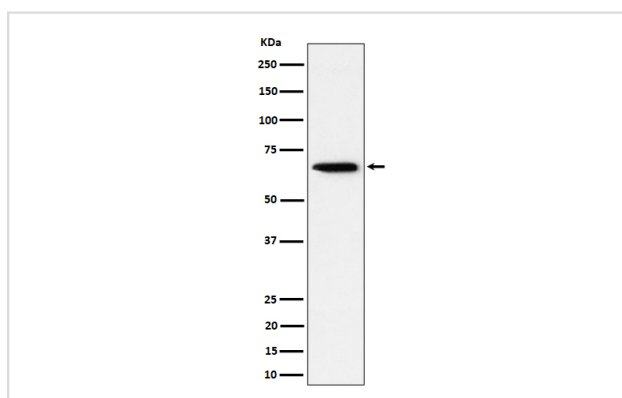
Description

Product Name	Sterol carrier protein 2 Rabbit mAb
Host Species	Rabbit
Clonality	Monoclonal
Isotype	Rabbit IgG
Purification	Affinity-chromatography
Applications	WB IHC ICC/IF
Species Reactivity	Human Mouse Rat
Specificity	Sterol carrier protein 2 Antibody detects endogenous levels of total Sterol carrier protein 2
Immunogen Description	A synthesized peptide derived from human Sterol carrier protein 2
Other Names	NLTP; SCP2; SCPchi; SCPX;
Accession No.	Uniprot:P22307
Uniprot	P22307
Calculated MW	58kDa
Formulation	Rabbit IgG in phosphate buffered saline , pH 7.4, 150mM NaCl, 0.02% sodium azide and 50% glycerol.
Storage	Store at +4Λ C short term. Store at -20Λ C long term. Avoid freeze / thaw cycle.

Application Details

WB: 1:500~1:2000 IHC: 1:50~1:200 ICC/IF: 1:50~1:200

Images



Western blot analysis of Sterol carrier protein 2 expression in HepG2 cell lysate.

Product Description

Mediates in vitro the transfer of all common phospholipids, cholesterol and gangliosides between membranes. May play a role in regulating steroidogenesis.

Note: This product is for in vitro research use only