

ALS2CR1 Rabbit mAb

Catalog No: #57038

Package Size: #57038-1 50ul #57038-2 100ul

Orders: order@signalwayantibody.com

Support: tech@signalwayantibody.com

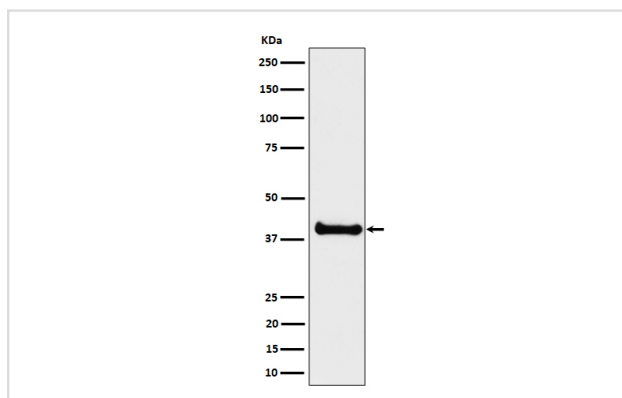
Description

Product Name	ALS2CR1 Rabbit mAb
Host Species	Rabbit
Clonality	Monoclonal
Isotype	Rabbit IgG
Purification	Affinity-chromatography
Applications	WB ICC/IF
Species Reactivity	Human
Specificity	ALS2CR1 Antibody detects endogenous levels of total ALS2CR1
Immunogen Description	A synthesized peptide derived from human ALS2CR1
Other Names	ALS2CR1; Nif311;
Accession No.	Uniprot:Q9GZT8
Uniprot	Q9GZT8
Calculated MW	38kDa
Formulation	Rabbit IgG in phosphate buffered saline , pH 7.4, 150mM NaCl, 0.02% sodium azide and 50% glycerol.
Storage	Store at +4Λ C short term. Store at -20Λ C long term. Avoid freeze / thaw cycle.

Application Details

WB: 1:500~1:2000 ICC/IF: 1:50~1:200

Images



Western blot analysis of ALS2CR1 expression in LNCaP cell lysate.

Product Description

May function as a transcriptional corepressor through its interaction with COPS2, negatively regulating the expression of genes involved in neuronal differentiation.

Note: This product is for in vitro research use only