

Bag1 Rabbit mAb

Catalog No: #57042

Package Size: #57042-1 50ul #57042-2 100ul

Orders: order@signalwayantibody.com

Support: tech@signalwayantibody.com

Description

Product Name	Bag1 Rabbit mAb
Host Species	Rabbit
Clonality	Monoclonal
Isotype	Rabbit IgG
Purification	Affinity-chromatography
Applications	WB IHC ICC/IF
Species Reactivity	Human Mouse Rat
Specificity	Bag1 Antibody detects endogenous levels of total Bag1
Immunogen Description	A synthesized peptide derived from human Bag1
Other Names	BAG1; HAP1; RAP46;
Accession No.	Uniprot:Q99933
Uniprot	Q99933
Calculated MW	33,46,50kDa
Formulation	Rabbit IgG in phosphate buffered saline , pH 7.4, 150mM NaCl, 0.02% sodium azide and 50% glycerol.
Storage	Store at +4Λ C short term. Store at -20Λ C long term. Avoid freeze / thaw cycle.

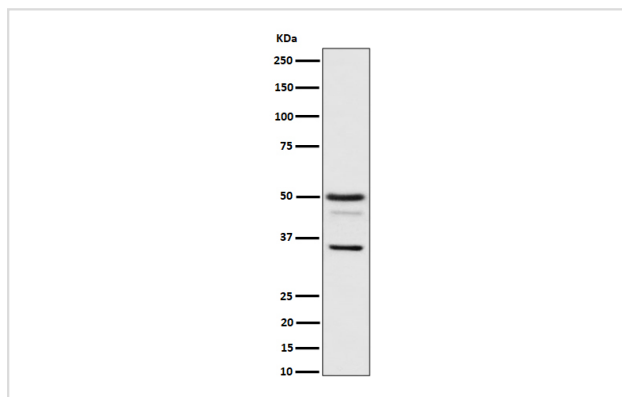
Application Details

WB: 1:500~1:2000

IHC: 1:50~1:200

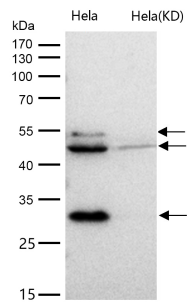
ICC/IF: 1:50~1:200

Images



Western blot analysis of Bag1 expression in HeLa cell lysate.

All lanes use the Antibody at 1:1K dilution for 1 hour at room temperature.



Product Description

Inhibits the chaperone activity of HSP70/HSC70 by promoting substrate release. Inhibits the pro-apoptotic function of PPP1R15A, and has anti-apoptotic activity. Markedly increases the anti-cell death function of BCL2 induced by various stimuli.

Note: This product is for in vitro research use only