

Semaphorin 4D / CD100 Rabbit mAb

Catalog No: #57048

Package Size: #57048-1 50ul #57048-2 100ul

Orders: order@signalwayantibody.com

Support: tech@signalwayantibody.com

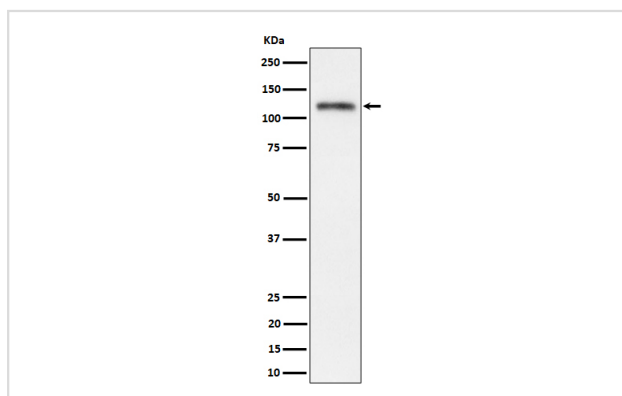
Description

Product Name	Semaphorin 4D / CD100 Rabbit mAb
Host Species	Rabbit
Clonality	Monoclonal
Isotype	Rabbit IgG
Purification	Affinity-chromatography
Applications	WB IHC ICC/IF
Species Reactivity	Human
Specificity	Semaphorin 4D / CD100 Antibody detects endogenous levels of total Semaphorin 4D / CD100
Immunogen Description	A synthesized peptide derived from human Semaphorin 4D / CD100
Other Names	BB18; CD100; COLL4; Collapsin 4; GR3; MSEMA; Sema4d; Semacl2; SemaH; SEMAJ; Semaphorin 4D; Semaphorin H; Semaphorin J; Semcl2;
Accession No.	Uniprot:Q92854
Uniprot	Q92854
Calculated MW	120,140kDa
Formulation	Rabbit IgG in phosphate buffered saline , pH 7.4, 150mM NaCl, 0.02% sodium azide and 50% glycerol.
Storage	Store at +4 Λ C short term. Store at -20 Λ C long term. Avoid freeze / thaw cycle.

Application Details

WB:1:500~1:2000IHC:1:50~1:200ICC/IF:1:50~1:200

Images



Western blot analysis of Semaphorin 4D / CD100 expression in SH-SY5Y cell lysate.

Product Description

May play a functional role in the immune system, as well as in the nervous system. Induces B-cells to aggregate and improves their viability in vitro.

Note: This product is for in vitro research use only