

## ICAM2 / CD102 Rabbit mAb

Catalog No: #57049

Package Size: #57049-1 50ul #57049-2 100ul

Orders: order@signalwayantibody.com

Support: tech@signalwayantibody.com

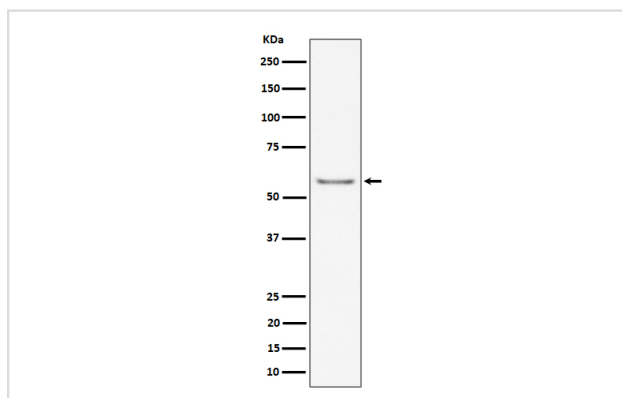
## Description

Product Name	ICAM2 / CD102 Rabbit mAb
Host Species	Rabbit
Clonality	Monoclonal
Isotype	Rabbit IgG
Purification	Affinity-chromatography
Applications	WB IHC IP
Species Reactivity	Mouse
Specificity	ICAM2 / CD102 Antibody detects endogenous levels of total ICAM2 / CD102
Immunogen Description	A synthesized peptide derived from human ICAM2 / CD102
Other Names	CD102; CD102 antigen; ICAM 2; Intercellular adhesion molecule 2; Ly60;
Accession No.	Uniprot:P35330
Uniprot	P35330
Calculated MW	60kDa
Formulation	Rabbit IgG in phosphate buffered saline , pH 7.4, 150mM NaCl, 0.02% sodium azide and 50% glycerol.
Storage	Store at +4Λ C short term. Store at -20Λ C long term. Avoid freeze / thaw cycle.

## Application Details

WB:1:500~1:2000IHC:1:50~1:200IP:1:50

## Images



Western blot analysis of ICAM2 / CD102 expression in mouse heart cell lysate.

## Product Description

May play a role in lymphocyte recirculation by blocking LFA1 dependent cell adhesion. Mediates adhesive interactions important for antigen specific immune response, NK cell mediated clearance, lymphocyte recirculation, and other cellular interactions important for immune response and surveillance.

---

Note: This product is for in vitro research use only