

ICAM3 / CD50 Rabbit mAb

Catalog No: #57053

Package Size: #57053-1 50ul #57053-2 100ul

Orders: order@signalwayantibody.com

Support: tech@signalwayantibody.com

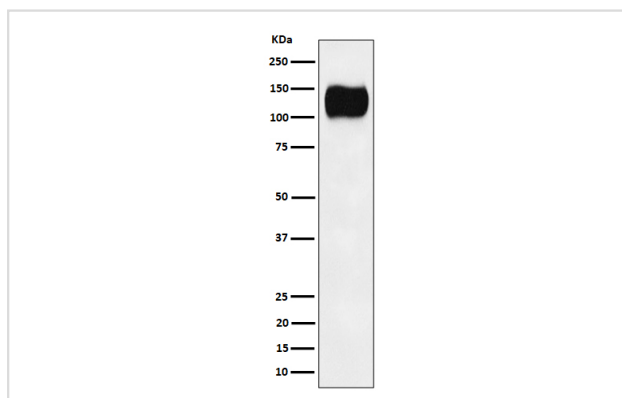
Description

| | |
|-----------------------|--|
| Product Name | ICAM3 / CD50 Rabbit mAb |
| Host Species | Rabbit |
| Clonality | Monoclonal |
| Isotype | Rabbit IgG |
| Purification | Affinity-chromatography |
| Applications | WB IHC ICC/IF |
| Species Reactivity | Human |
| Specificity | ICAM3 / CD50 Antibody detects endogenous levels of total ICAM3 / CD50 |
| Immunogen Description | A synthesized peptide derived from human ICAM3 / CD50 |
| Other Names | CD50; CDw50; ICAM 3; ICAM3; ICAMR; Intercellular adhesion molecule 3; |
| Accession No. | Uniprot:P32942 |
| Uniprot | P32942 |
| Calculated MW | 100-160kDa |
| Formulation | Rabbit IgG in phosphate buffered saline , pH 7.4, 150mM NaCl, 0.02% sodium azide and 50% glycerol. |
| Storage | Store at +4 Λ C short term. Store at -20 Λ C long term. Avoid freeze / thaw cycle. |

Application Details

WB:1:500~1:2000IHC:1:50~1:200ICC/IF:1:50~1:200

Images



Western blot analysis of ICAM3 / CD50 expression in Ramos cell lysate.

Product Description

ICAM proteins are ligands for the leukocyte adhesion protein LFA-1 (integrin alpha-L/beta-2). ICAM3 is also a ligand for integrin alpha-D/beta-2.

Note: This product is for in vitro research use only