

PLCB1 Rabbit mAb

Catalog No: #57055

Package Size: #57055-1 50ul #57055-2 100ul

Orders: order@signalwayantibody.com

Support: tech@signalwayantibody.com

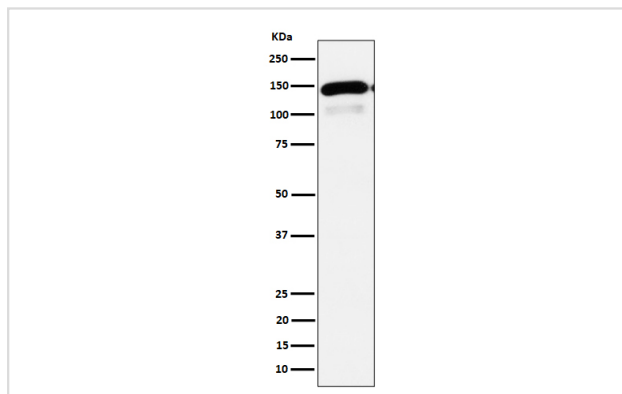
Description

Product Name	PLCB1 Rabbit mAb
Host Species	Rabbit
Clonality	Monoclonal
Isotype	Rabbit IgG
Purification	Affinity-chromatography
Applications	WB IHC
Species Reactivity	Human Mouse Rat
Specificity	PLCB1 Antibody detects endogenous levels of total PLCB1
Immunogen Description	A synthesized peptide derived from human PLCB1
Other Names	1 phosphatidylinositol 4,5 bisphosphate phosphodiesterase beta 1; 1-phosphatidylinositol 4; EIEE12; Inositoltrisphosphohydrolase; Monophosphatidylinositol phosphodiesterase; Phosphb; Phosphoinositidase C ; Phosphoinositide phospholipase C; Phosphoinositide phospholipase C-beta 1; Phospholipase C beta 1 (phosphoinositide-specific); Phospholipase C I; Phospholipase C-beta-1; Phospholipase C-I; PI PLC; PLC 1; PLC beta 1; PLC-154; PLC-beta-1; PLC-I; PLC154; Plcb; Plcb1; PLCbeta1; Triphosphoinositide phosphodiesterase;
Accession No.	Uniprot:Q9NQ66
Uniprot	Q9NQ66
Calculated MW	100,150kDa
Formulation	Rabbit IgG in phosphate buffered saline , pH 7.4, 150mM NaCl, 0.02% sodium azide and 50% glycerol.
Storage	Store at +4Λ C short term. Store at -20Λ C long term. Avoid freeze / thaw cycle.

Application Details

WB:1:500~1:2000IHC:1:50~1:200

Images



Western blot analysis of PLCB1 expression in HepG2 cell lysate.

Product Description

The production of the second messenger molecules diacylglycerol (DAG) and inositol 1,4,5-trisphosphate (IP3) is mediated by activated phosphatidylinositol-specific phospholipase C enzymes.

Note: This product is for in vitro research use only