

SLP2 Rabbit mAb

Catalog No: #57057

Package Size: #57057-1 50ul #57057-2 100ul

Orders: order@signalwayantibody.com

Support: tech@signalwayantibody.com

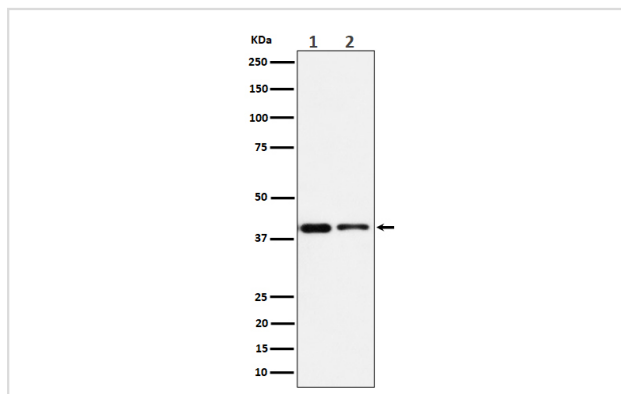
Description

Product Name	SLP2 Rabbit mAb
Host Species	Rabbit
Clonality	Monoclonal
Isotype	Rabbit IgG
Purification	Affinity-chromatography
Applications	WB ICC/IF IP FC
Species Reactivity	Human Mouse Rat
Specificity	SLP2 Antibody detects endogenous levels of total SLP2
Immunogen Description	A synthesized peptide derived from human SLP2
Other Names	EPB72 like protein 2; HSPC108; Paraprotein target 7; Paratarg 7; SLP2; Stomatin (EPB72) like 2; Stomatin like 2; Stomatin like protein 2; Stomatin-like protein 2; STOML2;
Accession No.	Uniprot:Q9UJZ1
Uniprot	Q9UJZ1
Calculated MW	39kDa
Formulation	Rabbit IgG in phosphate buffered saline , pH 7.4, 150mM NaCl, 0.02% sodium azide and 50% glycerol.
Storage	Store at +4 Λ C short term. Store at -20 Λ C long term. Avoid freeze / thaw cycle.

Application Details

WB:1:500~1:2000 ICC/IF:1:50~1:200 IP:1:50 FC:1:50

Images



Western blot analysis of SLP2 expression in (1) Jurkat cell lysate; (2) RAW 264.7 cell lysate.

Product Description

Probably regulates the biogenesis and the activity of mitochondria. Stimulates cardiolipin biosynthesis, binds cardiolipin-enriched membranes where it recruits and stabilizes some proteins including prohibitin and may therefore act in the organization of functional microdomains in mitochondrial membranes.

Note: This product is for in vitro research use only