

Ube2L3 / UBCH7 Rabbit mAb

Catalog No: #57059

Package Size: #57059-1 50ul #57059-2 100ul

Orders: order@signalwayantibody.com

Support: tech@signalwayantibody.com

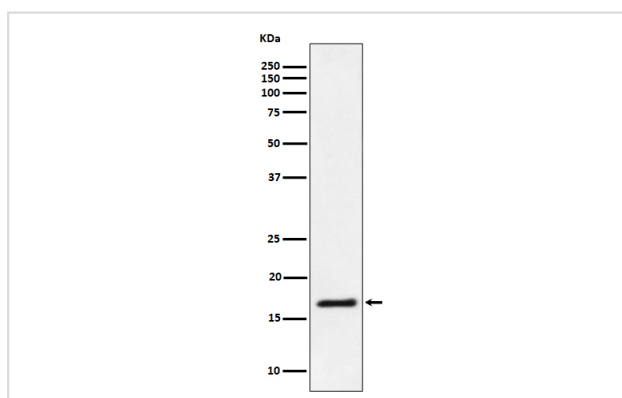
Description

Product Name	Ube2L3 / UBCH7 Rabbit mAb
Host Species	Rabbit
Clonality	Monoclonal
Isotype	Rabbit IgG
Purification	Affinity-chromatography
Applications	WB IHC ICC/IF
Species Reactivity	Human Mouse Rat
Specificity	Ube2L3 / UBCH7 Antibody detects endogenous levels of total Ube2L3 / UBCH7
Immunogen Description	A synthesized peptide derived from human Ube2L3 / UBCH7
Other Names	UBCE7; UbcH7; UbcM4; Ube2l3;
Accession No.	Uniprot:P68036
Uniprot	P68036
Calculated MW	17kDa
Formulation	Rabbit IgG in phosphate buffered saline , pH 7.4, 150mM NaCl, 0.02% sodium azide and 50% glycerol.
Storage	Store at +4 Λ C short term. Store at -20 Λ C long term. Avoid freeze / thaw cycle.

Application Details

WB: 1:500~1:2000 IHC: 1:50~1:200 ICC/IF: 1:50~1:200

Images



Western blot analysis of Ube2L3 / UBCH7 expression in Jurkat cell lysate.

Product Description

Accepts ubiquitin from the E1 complex and catalyzes its covalent attachment to other proteins. In vitro catalyzes 'Lys-11'-linked polyubiquitination. Involved in the selective degradation of short-lived and abnormal proteins. Down-regulated during the S-phase it is involved in progression through the cell cycle. Regulates nuclear hormone receptors transcriptional activity. May play a role in myelopoiesis.

Note: This product is for in vitro research use only