

LAT Rabbit mAb

Catalog No: #57062

Package Size: #57062-1 50ul #57062-2 100ul

Orders: order@signalwayantibody.com

Support: tech@signalwayantibody.com

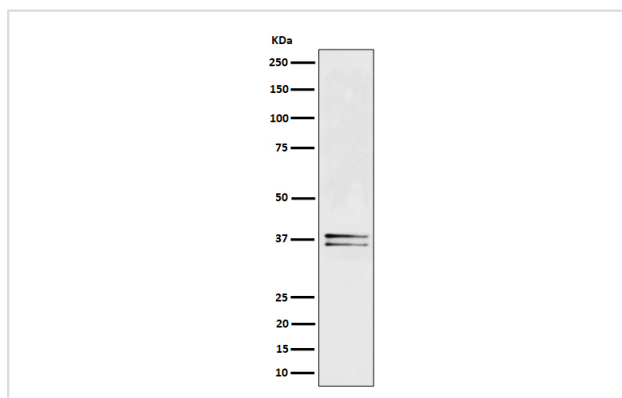
Description

Product Name	LAT Rabbit mAb
Host Species	Rabbit
Clonality	Monoclonal
Isotype	Rabbit IgG
Purification	Affinity-chromatography
Applications	WB IHC
Species Reactivity	Human
Specificity	LAT Antibody detects endogenous levels of total LAT
Immunogen Description	A synthesized peptide derived from human LAT
Other Names	lat; LAT1; pp36;
Accession No.	Uniprot:O43561
Uniprot	O43561
Calculated MW	36,38kDa
Formulation	Rabbit IgG in phosphate buffered saline , pH 7.4, 150mM NaCl, 0.02% sodium azide and 50% glycerol.
Storage	Store at +4 Λ C short term. Store at -20 Λ C long term. Avoid freeze / thaw cycle.

Application Details

WB:1:500~1:2000IHC:1:50~1:200

Images



Western blot analysis of LAT expression in Jurkat cell lysate.

Product Description

Required for TCR (T-cell antigen receptor)- and pre-TCR-mediated signaling, both in mature T-cells and during their development. Involved in FCGR3 (low affinity immunoglobulin gamma Fc region receptor III)-mediated signaling in natural killer cells and FCER1 (high affinity immunoglobulin epsilon receptor)-mediated signaling in mast cells.

Note: This product is for in vitro research use only