

DENN Rabbit mAb

Catalog No: #57068

Package Size: #57068-1 50ul #57068-2 100ul

Orders: order@signalwayantibody.com

Support: tech@signalwayantibody.com

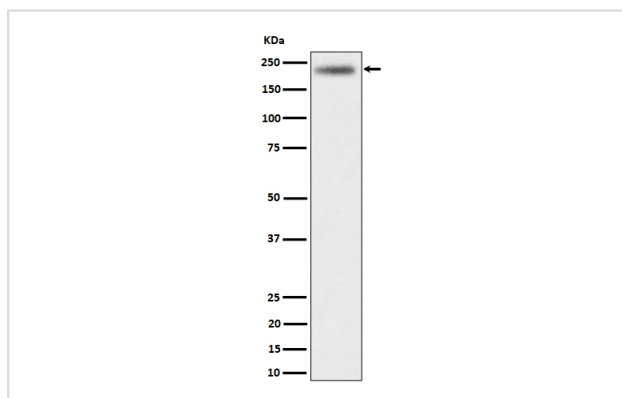
Description

Product Name	DENN Rabbit mAb
Host Species	Rabbit
Clonality	Monoclonal
Isotype	Rabbit IgG
Purification	Affinity-chromatography
Applications	WB IHC
Species Reactivity	Human Mouse Rat
Specificity	DENN Antibody detects endogenous levels of total DENN
Immunogen Description	A synthesized peptide derived from human DENN
Other Names	IG20; MADD; RAB3GEP;
Accession No.	Uniprot:Q8WXG6
Uniprot	Q8WXG6
Calculated MW	230kDa
Formulation	Rabbit IgG in phosphate buffered saline , pH 7.4, 150mM NaCl, 0.02% sodium azide and 50% glycerol.
Storage	Store at +4 Λ C short term. Store at -20 Λ C long term. Avoid freeze / thaw cycle.

Application Details

WB: 1:500~1:2000 IHC: 1:50~1:200

Images



Western blot analysis of DENN expression in HeLa cell lysate.

Product Description

Plays a significant role in regulating cell proliferation, survival and death through alternative mRNA splicing. Isoform 5 shows increased cell proliferation and isoform 2 shows decreased. Converts GDP-bound inactive form of RAB3A, RAB3C and RAB3D to the GTP-bound active forms.

Note: This product is for in vitro research use only