

SARA Rabbit mAb

Catalog No: #57070

Package Size: #57070-1 50ul #57070-2 100ul

Orders: order@signalwayantibody.com

Support: tech@signalwayantibody.com

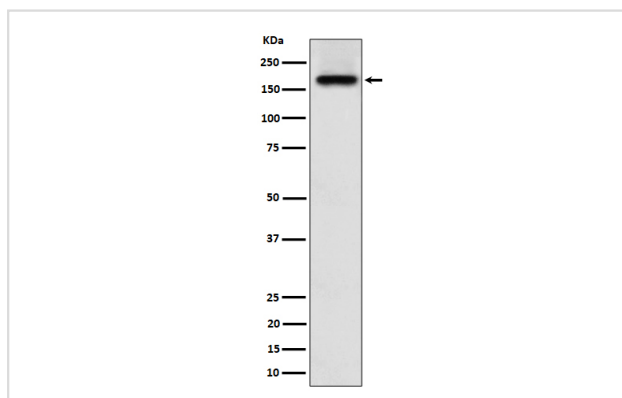
Description

Product Name	SARA Rabbit mAb
Host Species	Rabbit
Clonality	Monoclonal
Isotype	Rabbit IgG
Purification	Affinity-chromatography
Applications	WB IHC
Species Reactivity	Human
Specificity	SARA Antibody detects endogenous levels of total SARA
Immunogen Description	A synthesized peptide derived from human SARA
Other Names	hSARA; MADHIP; NSP; SAR1; SARA; SARA1; SMADIP; ZFYVE9;
Accession No.	Uniprot:O95405
Uniprot	O95405
Calculated MW	180kDa
Formulation	Rabbit IgG in phosphate buffered saline , pH 7.4, 150mM NaCl, 0.02% sodium azide and 50% glycerol.
Storage	Store at +4 Λ C short term. Store at -20 Λ C long term. Avoid freeze / thaw cycle.

Application Details

WB: 1:500~1:2000 IHC: 1:50~1:200

Images



Western blot analysis of SARA expression in A673 cell lysate.

Product Description

Early endosomal protein that functions to recruit SMAD2/SMAD3 to intracellular membranes and to the TGF-beta receptor. Plays a significant role in TGF-mediated signaling by regulating the subcellular location of SMAD2 and SMAD3 and modulating the transcriptional activity of the SMAD3/SMAD4 complex. Possibly associated with TGF-beta receptor internalization.

Note: This product is for in vitro research use only