

N4BP1 Rabbit mAb

Catalog No: #57073

Package Size: #57073-1 50ul #57073-2 100ul

Orders: order@signalwayantibody.com

Support: tech@signalwayantibody.com

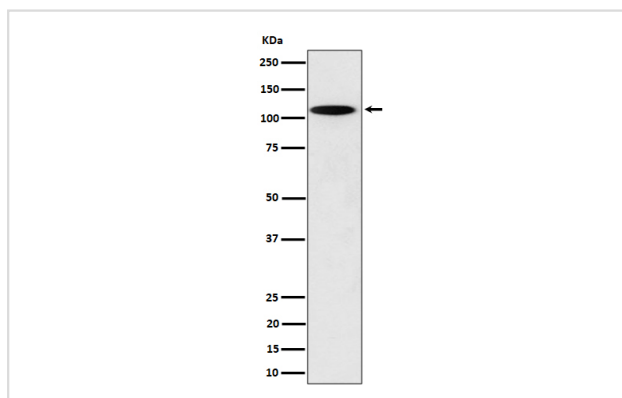
Description

Product Name	N4BP1 Rabbit mAb
Host Species	Rabbit
Clonality	Monoclonal
Isotype	Rabbit IgG
Purification	Affinity-chromatography
Applications	WB
Species Reactivity	Mouse Rat
Specificity	N4BP1 Antibody detects endogenous levels of total N4BP1
Immunogen Description	A synthesized peptide derived from human N4BP1
Other Names	N4BP1;
Accession No.	Uniprot:Q6A037(mouse)
Uniprot	Q6A037(mouse)
Calculated MW	110kDa
Formulation	Rabbit IgG in phosphate buffered saline , pH 7.4, 150mM NaCl, 0.02% sodium azide and 50% glycerol.
Storage	Store at +4Λ C short term. Store at -20Λ C long term. Avoid freeze / thaw cycle.

Application Details

WB: 1:500~1:2000

Images



Western blot analysis of N4BP1 expression in PC12 cell lysate.

Product Description

Inhibitor of the E3 ubiquitin-protein ligase ITCH. Acts by interacting with the second WW domain of ITCH, leading to compete with ITCH's substrates and impairing ubiquitination of substrates.

Note: This product is for in vitro research use only