

CLIP170 Rabbit mAb

Catalog No: #57074

Package Size: #57074-1 50ul #57074-2 100ul

Orders: order@signalwayantibody.com

Support: tech@signalwayantibody.com

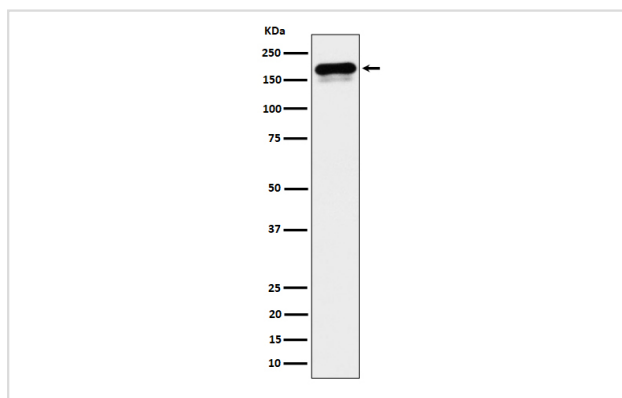
Description

Product Name	CLIP170 Rabbit mAb
Host Species	Rabbit
Clonality	Monoclonal
Isotype	Rabbit IgG
Purification	Affinity-chromatography
Applications	WB IHC
Species Reactivity	Human
Specificity	CLIP170 Antibody detects endogenous levels of total CLIP170
Immunogen Description	A synthesized peptide derived from human CLIP170
Other Names	CLIP; CYLN1; Restin; RSN;
Accession No.	Uniprot:P30622
Uniprot	P30622
Calculated MW	130,170kDa
Formulation	Rabbit IgG in phosphate buffered saline , pH 7.4, 150mM NaCl, 0.02% sodium azide and 50% glycerol.
Storage	Store at +4 Λ C short term. Store at -20 Λ C long term. Avoid freeze / thaw cycle.

Application Details

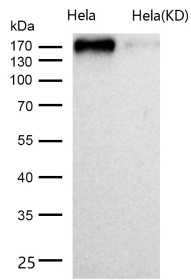
WB: 1:500~1:2000 IHC: 1:50~1:200

Images



Western blot analysis of CLIP170 expression in HeLa cell lysate.

All lanes use the Antibody at 1:1K dilution for 1 hour at room temperature.



Product Description

Seems to be a intermediate filament associated protein that links endocytic vesicles to microtubules.

Note: This product is for in vitro research use only