

PEF1 Rabbit mAb

Catalog No: #57076

Package Size: #57076-1 50ul #57076-2 100ul

Orders: order@signalwayantibody.com

Support: tech@signalwayantibody.com

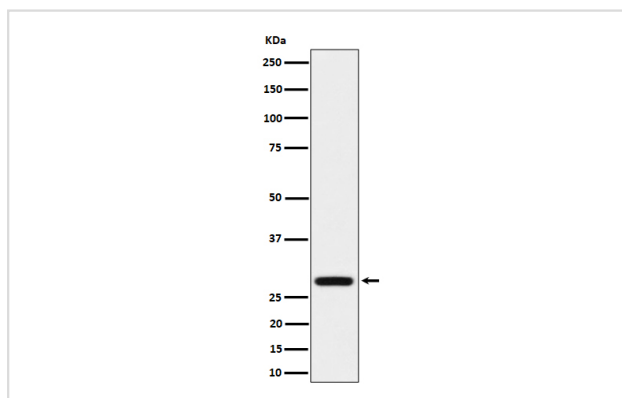
Description

Product Name	PEF1 Rabbit mAb
Host Species	Rabbit
Clonality	Monoclonal
Isotype	Rabbit IgG
Purification	Affinity-chromatography
Applications	WB
Species Reactivity	Human Mouse Rat
Specificity	PEF1 Antibody detects endogenous levels of total PEF1
Immunogen Description	A synthesized peptide derived from human PEF1
Other Names	ABP32; PEF; pef1; PEF1A; Peflin;
Accession No.	Uniprot:Q9UBV8
Uniprot	Q9UBV8
Calculated MW	30kDa
Formulation	Rabbit IgG in phosphate buffered saline , pH 7.4, 150mM NaCl, 0.02% sodium azide and 50% glycerol.
Storage	Store at +4Λ C short term. Store at -20Λ C long term. Avoid freeze / thaw cycle.

Application Details

WB: 1:500~1:2000

Images



Western blot analysis of PEF1 expression in HeLa cell lysate.

Product Description

Calcium-binding protein that acts as an adapter that bridges unrelated proteins or stabilizes weak protein-protein complexes in response to calcium. Together with PDCD6, acts as calcium-dependent adapter for the BCR(KLHL12) complex, a complex involved in endoplasmic reticulum (ER)-Golgi transport by regulating the size of COPII coats (PubMed:27716508).

Note: This product is for in vitro research use only