

PIN4 Rabbit mAb

Catalog No: #57079

Package Size: #57079-1 50ul #57079-2 100ul

Orders: order@signalwayantibody.com

Support: tech@signalwayantibody.com

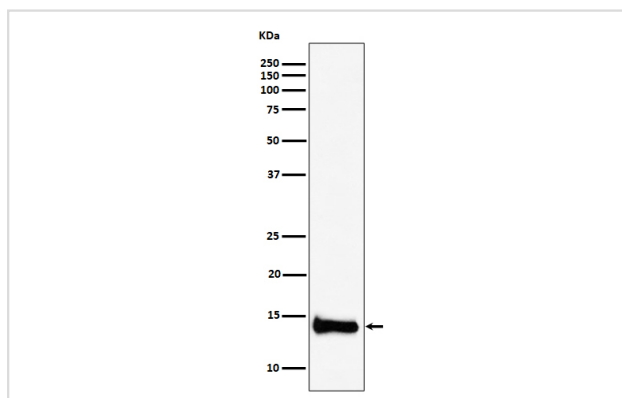
Description

Product Name	PIN4 Rabbit mAb
Host Species	Rabbit
Clonality	Monoclonal
Isotype	Rabbit IgG
Purification	Affinity-chromatography
Applications	WB IHC ICC/IF
Species Reactivity	Human Mouse Rat
Specificity	PIN4 Antibody detects endogenous levels of total PIN4
Immunogen Description	A synthesized peptide derived from human PIN4
Other Names	EPVH; hEPVH; hPar14; hPar17; Par14; Par17; PIN4;
Accession No.	Uniprot:Q9Y237
Uniprot	Q9Y237
Calculated MW	14kDa
Formulation	Rabbit IgG in phosphate buffered saline , pH 7.4, 150mM NaCl, 0.02% sodium azide and 50% glycerol.
Storage	Store at +4 Λ C short term. Store at -20 Λ C long term. Avoid freeze / thaw cycle.

Application Details

WB:1:500~1:2000IHC:1:50~1:200ICC/IF:1:50~1:200

Images



Western blot analysis of PIN4 expression in HepG2 cell lysate.

Product Description

Isoform 1 is involved as a ribosomal RNA processing factor in ribosome biogenesis. Binds to tightly bent AT-rich stretches of double-stranded DNA. Isoform 2 binds to double-stranded DNA.

Note: This product is for in vitro research use only