

## CD32A + CD32B + CD32C Rabbit mAb

Catalog No: #57085

Package Size: #57085-1 50ul #57085-2 100ul

Orders: order@signalwayantibody.com

Support: tech@signalwayantibody.com

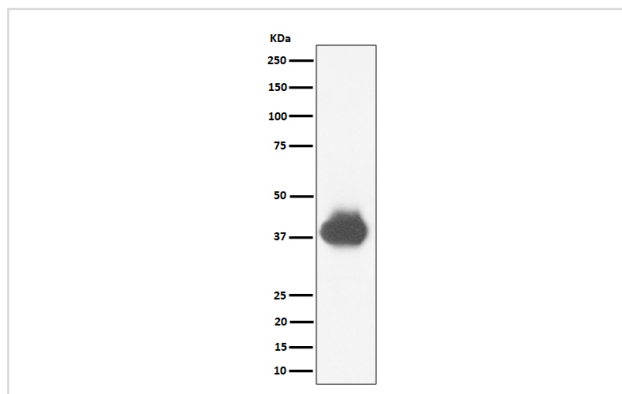
## Description

Product Name	CD32A + CD32B + CD32C Rabbit mAb
Host Species	Rabbit
Clonality	Monoclonal
Isotype	Rabbit IgG
Purification	Affinity-chromatography
Applications	WB IHC
Species Reactivity	Human
Specificity	CD32A + CD32B + CD32C Antibody detects endogenous levels of total CD32A + CD32B + CD32C
Immunogen Description	A synthesized peptide derived from human CD32A + CD32B + CD32C
Other Names	CD32; CD32A; CD32B; CD32C; CDw32; FCG2; FcGR; FCGR2; FCGR2A; FCGR2A1; FCGR2B; FCGR2C; Fcgr3; Fcgr3a; FcgRII; FcRII a; FcRII; FcRII b; FcRII c; FcRIIC; IGFR2;
Accession No.	Uniprot:P12318/P31994/P31995
Uniprot	P12318/P31994/P31995
Calculated MW	37-43kDa
Formulation	Rabbit IgG in phosphate buffered saline , pH 7.4, 150mM NaCl, 0.02% sodium azide and 50% glycerol.
Storage	Store at +4 $\Lambda$ C short term. Store at -20 $\Lambda$ C long term. Avoid freeze / thaw cycle.

## Application Details

WB:1:500~1:2000IHC:1:50~1:200

## Images



Western blot analysis of CD32A + CD32B + CD32C expression in U937 cell lysate.

## Product Description

Binds to the Fc region of immunoglobulins gamma. Low affinity receptor. By binding to IgG it initiates cellular responses against pathogens and soluble antigens. Promotes phagocytosis of opsonized antigens.

---

Note: This product is for in vitro research use only