

Syndecan 3 Rabbit mAb

Catalog No: #57086

Package Size: #57086-1 50ul #57086-2 100ul

Orders: order@signalwayantibody.com

Support: tech@signalwayantibody.com

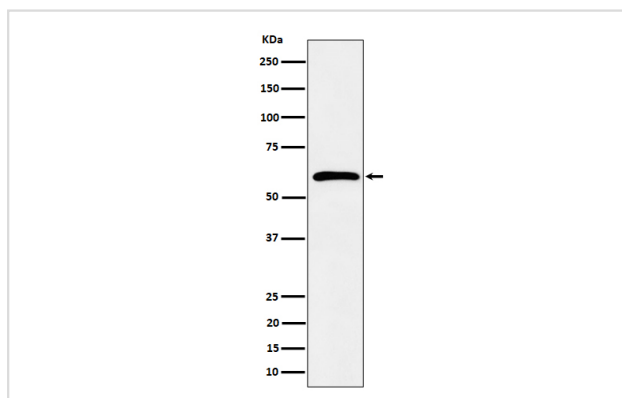
Description

Product Name	Syndecan 3 Rabbit mAb
Host Species	Rabbit
Clonality	Monoclonal
Isotype	Rabbit IgG
Purification	Affinity-chromatography
Applications	WB
Species Reactivity	Human Mouse Rat
Specificity	Syndecan 3 Antibody detects endogenous levels of total Syndecan 3
Immunogen Description	A synthesized peptide derived from human Syndecan 3
Other Names	Sdc3; SDCN; SYND3; syndecan proteoglycan 3;
Accession No.	Uniprot:O75056
Uniprot	O75056
Calculated MW	60kDa
Formulation	Rabbit IgG in phosphate buffered saline , pH 7.4, 150mM NaCl, 0.02% sodium azide and 50% glycerol.
Storage	Store at +4Λ C short term. Store at -20Λ C long term. Avoid freeze / thaw cycle.

Application Details

WB: 1:500~1:2000

Images



Western blot analysis of Syndecan 3 expression in K562 cell lysate.

Product Description

Cell surface proteoglycan that may bear heparan sulfate (By similarity). May have a role in the organization of cell shape by affecting the actin cytoskeleton, possibly by transferring signals from the cell surface in a sugar-dependent mechanism.

Note: This product is for in vitro research use only