

CEP43 Rabbit mAb

Catalog No: #57088

Package Size: #57088-1 50ul #57088-2 100ul

Orders: order@signalwayantibody.com

Support: tech@signalwayantibody.com

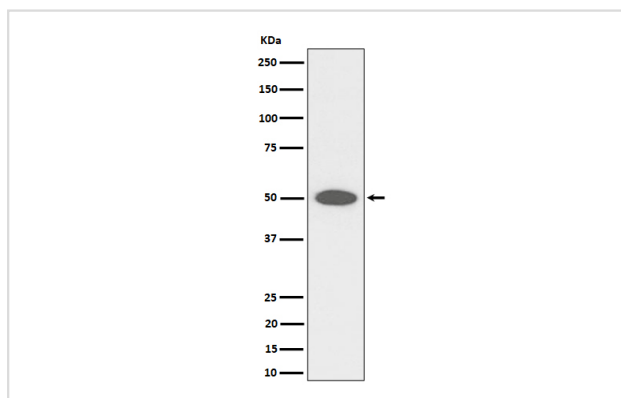
Description

Product Name	CEP43 Rabbit mAb
Host Species	Rabbit
Clonality	Monoclonal
Isotype	Rabbit IgG
Purification	Affinity-chromatography
Applications	WB ICC/IF
Species Reactivity	Human Mouse Rat
Specificity	CEP43 Antibody detects endogenous levels of total CEP43
Immunogen Description	A synthesized peptide derived from human CEP43
Other Names	FGFR1OP; FOP;
Accession No.	Uniprot:O95684
Uniprot	O95684
Calculated MW	50kDa
Formulation	Rabbit IgG in phosphate buffered saline , pH 7.4, 150mM NaCl, 0.02% sodium azide and 50% glycerol.
Storage	Store at +4Λ C short term. Store at -20Λ C long term. Avoid freeze / thaw cycle.

Application Details

WB: 1:500~1:2000 ICC/IF: 1:50~1:200

Images



Western blot analysis of CEP43 expression in HeLa cell lysate.

Product Description

Required for anchoring microtubules to the centrosomes.

Note: This product is for in vitro research use only