

## TAPP1 Rabbit mAb

Catalog No: #57093

Package Size: #57093-1 50ul #57093-2 100ul

Orders: order@signalwayantibody.com

Support: tech@signalwayantibody.com

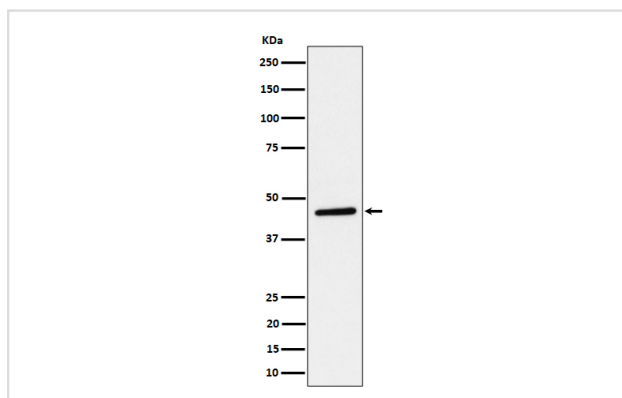
## Description

Product Name	TAPP1 Rabbit mAb
Host Species	Rabbit
Clonality	Monoclonal
Isotype	Rabbit IgG
Purification	Affinity-chromatography
Applications	WB
Species Reactivity	Human Mouse Rat
Specificity	TAPP1 Antibody detects endogenous levels of total TAPP1
Immunogen Description	A synthesized peptide derived from human TAPP1
Other Names	PLEKHA1; TAPP1;
Accession No.	Uniprot:Q9HB21
Uniprot	Q9HB21
Calculated MW	43kDa
Formulation	Rabbit IgG in phosphate buffered saline , pH 7.4, 150mM NaCl, 0.02% sodium azide and 50% glycerol.
Storage	Store at +4Λ C short term. Store at -20Λ C long term. Avoid freeze / thaw cycle.

## Application Details

WB: 1:500~1:2000

## Images



Western blot analysis of TAPP1 expression in HeLa cell lysate.

## Product Description

Binds specifically to phosphatidylinositol 3,4-diphosphate (PtdIns3,4P2), but not to other phosphoinositides. May recruit other proteins to the plasma membrane.

---

Note: This product is for in vitro research use only