

eIF1A Rabbit mAb

Catalog No: #57102

Package Size: #57102-1 50ul #57102-2 100ul

Orders: order@signalwayantibody.com

Support: tech@signalwayantibody.com

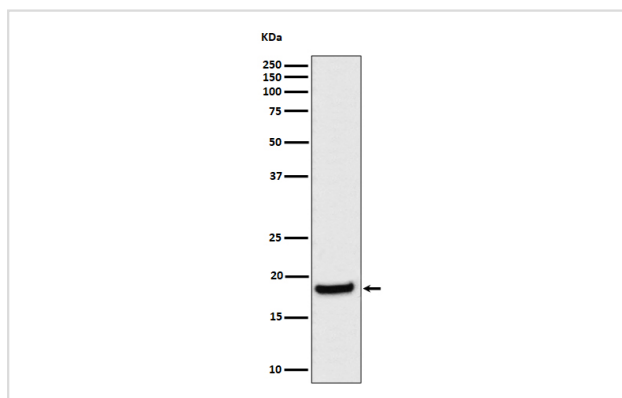
Description

Product Name	eIF1A Rabbit mAb
Host Species	Rabbit
Clonality	Monoclonal
Isotype	Rabbit IgG
Purification	Affinity-chromatography
Applications	WB IHC ICC/IF IP FC
Species Reactivity	Human Mouse Rat
Specificity	eIF1A Antibody detects endogenous levels of total eIF1A
Immunogen Description	A synthesized peptide derived from human eIF1A
Other Names	EIF1A; EIF1AP1; EIF1AX; EIF4C;
Accession No.	Uniprot:P47813
Uniprot	P47813
Calculated MW	18kDa
Formulation	Rabbit IgG in phosphate buffered saline , pH 7.4, 150mM NaCl, 0.02% sodium azide and 50% glycerol.
Storage	Store at +4 Λ C short term. Store at -20 Λ C long term. Avoid freeze / thaw cycle.

Application Details

WB:1:500~1:2000IHC:1:50~1:200ICC/IF:1:50~1:200IP:1:50FC:1:50

Images



Western blot analysis of eIF1A expression in HeLa cell lysate.

Product Description

eIF1A is an essential eukaryotic translation initiation factor. The protein is required for the binding of the 43S complex (a 40S subunit, eIF2/GTP/Met-tRNAⁱ and eIF3) to the 5' end of capped RNA (referenced from entrez gene).

Note: This product is for in vitro research use only