

PSMC5 Rabbit mAb

Catalog No: #57105

Package Size: #57105-1 50ul #57105-2 100ul

Orders: order@signalwayantibody.com

Support: tech@signalwayantibody.com

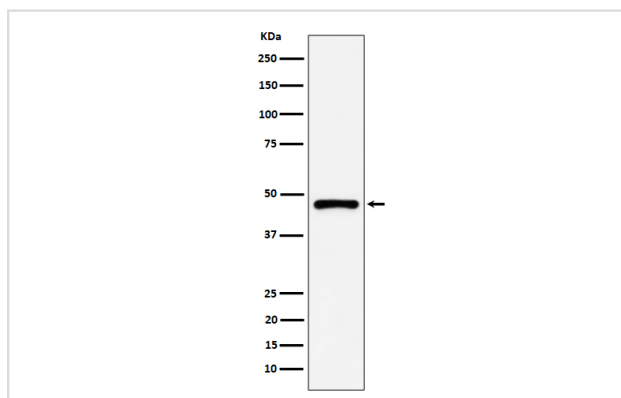
Description

Product Name	PSMC5 Rabbit mAb
Host Species	Rabbit
Clonality	Monoclonal
Isotype	Rabbit IgG
Purification	Affinity-chromatography
Applications	WB IHC ICC/IF IP FC
Species Reactivity	Human Mouse Rat
Specificity	PSMC5 Antibody detects endogenous levels of total PSMC5
Immunogen Description	A synthesized peptide derived from human PSMC5
Other Names	Cim3; p45; p45/SUG; PSMC5; Rpt6; SUG1; TBP10; TRIP1;
Accession No.	Uniprot:P62195
Uniprot	P62195
Calculated MW	46kDa
Formulation	Rabbit IgG in phosphate buffered saline , pH 7.4, 150mM NaCl, 0.02% sodium azide and 50% glycerol.
Storage	Store at +4 Λ C short term. Store at -20 Λ C long term. Avoid freeze / thaw cycle.

Application Details

WB:1:500~1:2000IHC:1:50~1:200ICC/IF:1:50~1:200IP:1:50FC:1:50

Images



Western blot analysis of PSMC5 expression in A431 cell lysate.

Product Description

The 26S protease is involved in the ATP-dependent degradation of ubiquitinated proteins. The regulatory (or ATPase) complex confers ATP dependency and substrate specificity to the 26S complex.

Note: This product is for in vitro research use only