

## BRAT1 Rabbit mAb

Catalog No: #57106

Package Size: #57106-1 50ul #57106-2 100ul

Orders: order@signalwayantibody.com

Support: tech@signalwayantibody.com

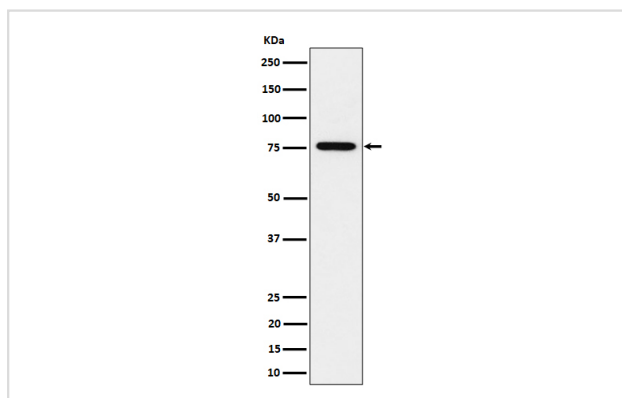
## Description

Product Name	BRAT1 Rabbit mAb
Host Species	Rabbit
Clonality	Monoclonal
Isotype	Rabbit IgG
Purification	Affinity-chromatography
Applications	WB ICC/IF IP FC
Species Reactivity	Human
Specificity	BRAT1 Antibody detects endogenous levels of total BRAT1
Immunogen Description	A synthesized peptide derived from human BRAT1
Other Names	BAAT1; brat1; C7orf27; RMFSL;
Accession No.	Uniprot:Q6PJG6
Uniprot	Q6PJG6
Calculated MW	75kDa
Formulation	Rabbit IgG in phosphate buffered saline , pH 7.4, 150mM NaCl, 0.02% sodium azide and 50% glycerol.
Storage	Store at +4 $\Lambda$ C short term. Store at -20 $\Lambda$ C long term. Avoid freeze / thaw cycle.

## Application Details

WB:1:500~1:2000IC/IF:1:50~1:200IP:1:50FC:1:50

## Images



Western blot analysis of BRAT1 expression in HeLa cell lysate.

## Product Description

Required for activation of ATM following ionizing radiation. May act by regulating dephosphorylation of ATM.

---

Note: This product is for in vitro research use only