

## NSDHL Rabbit mAb

Catalog No: #57111

Package Size: #57111-1 50ul #57111-2 100ul

Orders: order@signalwayantibody.com

Support: tech@signalwayantibody.com

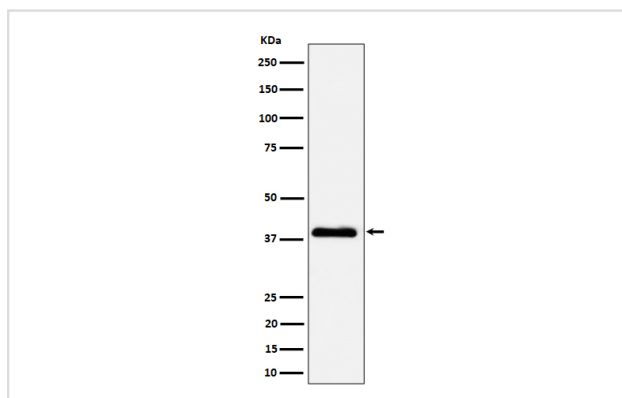
## Description

Product Name	NSDHL Rabbit mAb
Host Species	Rabbit
Clonality	Monoclonal
Isotype	Rabbit IgG
Purification	Affinity-chromatography
Applications	WB IHC ICC/IF
Species Reactivity	Human
Specificity	NSDHL Antibody detects endogenous levels of total NSDHL
Immunogen Description	A synthesized peptide derived from human NSDHL
Other Names	H105E3; NSDHL; SDR31E1; XAP104;
Accession No.	Uniprot:Q15738
Uniprot	Q15738
Calculated MW	38kDa
Formulation	Rabbit IgG in phosphate buffered saline , pH 7.4, 150mM NaCl, 0.02% sodium azide and 50% glycerol.
Storage	Store at +4 $\Lambda$ C short term. Store at -20 $\Lambda$ C long term. Avoid freeze / thaw cycle.

## Application Details

WB: 1:500~1:2000 IHC: 1:50~1:200 ICC/IF: 1:50~1:200

## Images



Western blot analysis of NSDHL expression in A431 cell lysate.

## Product Description

Catalyzes the NAD(P)<sup>+</sup>-dependent oxidative decarboxylation of the C4 methyl groups of 4- $\alpha$ -carboxysterols in post-squalene cholesterol biosynthesis (By similarity).

---

Note: This product is for in vitro research use only