

## SAFB Rabbit mAb

Catalog No: #57113

Package Size: #57113-1 50ul #57113-2 100ul

Orders: order@signalwayantibody.com

Support: tech@signalwayantibody.com

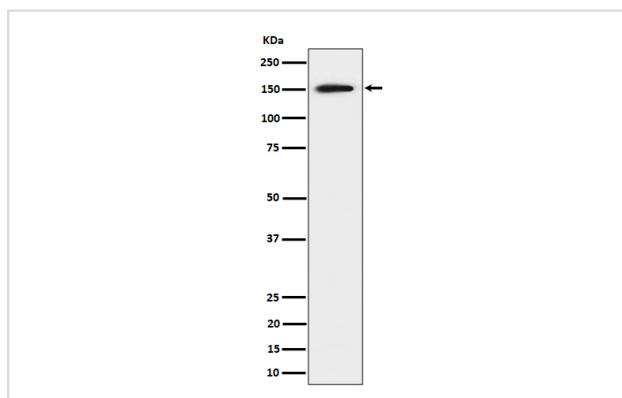
## Description

Product Name	SAFB Rabbit mAb
Host Species	Rabbit
Clonality	Monoclonal
Isotype	Rabbit IgG
Purification	Affinity-chromatography
Applications	WB IHC ICC/IF
Species Reactivity	Human Mouse Rat
Specificity	SAFB Antibody detects endogenous levels of total SAFB
Immunogen Description	A synthesized peptide derived from human SAFB
Other Names	HAP; HET; SAFB; SAFB1;
Accession No.	Uniprot:Q15424
Uniprot	Q15424
Calculated MW	150kDa
Formulation	Rabbit IgG in phosphate buffered saline , pH 7.4, 150mM NaCl, 0.02% sodium azide and 50% glycerol.
Storage	Store at +4Λ C short term. Store at -20Λ C long term. Avoid freeze / thaw cycle.

## Application Details

WB:1:500~1:2000IHC:1:50~1:200ICC/IF:1:50~1:200

## Images



Western blot analysis of SAFB expression in 293 cell lysate.

## Product Description

Binds to scaffold/matrix attachment region (S/MAR) DNA and forms a molecular assembly point to allow the formation of a 'transcriptosomal' complex (consisting of SR proteins and RNA polymerase II) coupling transcription and RNA processing (By similarity). Can function as an estrogen receptor corepressor and can also bind to the HSP27 promoter and decrease its transcription. Can inhibit cell proliferation.

---

Note: This product is for in vitro research use only