

MK3 Rabbit mAb

Catalog No: #57115

Package Size: #57115-1 50ul #57115-2 100ul

Orders: order@signalwayantibody.com

Support: tech@signalwayantibody.com

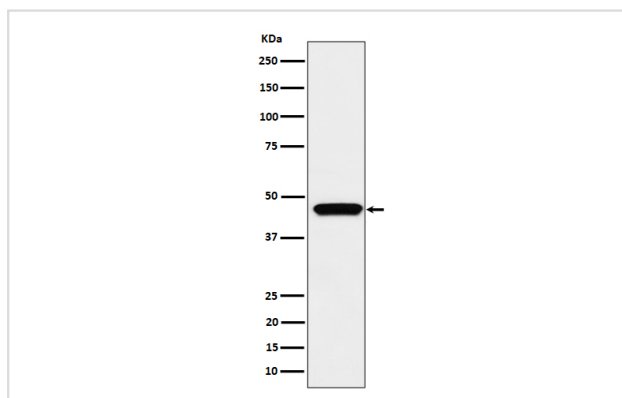
Description

Product Name	MK3 Rabbit mAb
Host Species	Rabbit
Clonality	Monoclonal
Isotype	Rabbit IgG
Purification	Affinity-chromatography
Applications	WB IP
Species Reactivity	Human
Specificity	MK3 Antibody detects endogenous levels of total MK3
Immunogen Description	A synthesized peptide derived from human MK3
Other Names	Chromosome 3p kinase; MAPKAP; MAPKAP kinase 3; MAPKAP3 MAPKAPK 3; Mapkapk3;
Accession No.	Uniprot:Q16644
Uniprot	Q16644
Calculated MW	43kDa
Formulation	Rabbit IgG in phosphate buffered saline , pH 7.4, 150mM NaCl, 0.02% sodium azide and 50% glycerol.
Storage	Store at +4Λ C short term. Store at -20Λ C long term. Avoid freeze / thaw cycle.

Application Details

WB:1:500~1:2000IP:1:50

Images



Western blot analysis of MK3 expression in Jurkat cell lysate.

Product Description

Stress-activated serine/threonine-protein kinase involved in cytokines production, endocytosis, cell migration, chromatin remodeling and transcriptional regulation.

Note: This product is for in vitro research use only