

CLIC4 Rabbit mAb

Catalog No: #57118

Package Size: #57118-1 50ul #57118-2 100ul

Orders: order@signalwayantibody.com

Support: tech@signalwayantibody.com

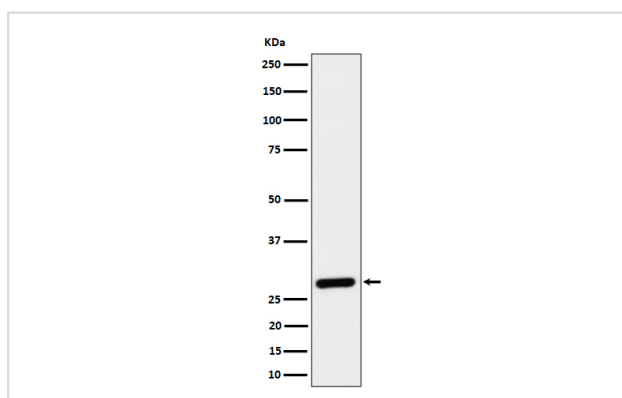
Description

| | |
|-----------------------|--|
| Product Name | CLIC4 Rabbit mAb |
| Host Species | Rabbit |
| Clonality | Monoclonal |
| Isotype | Rabbit IgG |
| Purification | Affinity-chromatography |
| Applications | WB IHC ICC/IF IP FC |
| Species Reactivity | Human Mouse Rat |
| Specificity | CLIC4 Antibody detects endogenous levels of total CLIC4 |
| Immunogen Description | A synthesized peptide derived from human CLIC4 |
| Other Names | Chloride intracellular channel 4; Clic4; CLIC4L; HUH1; MC3S5; mtCLIC; p64H1; |
| Accession No. | Uniprot:Q9Y696 |
| Uniprot | Q9Y696 |
| Calculated MW | 29kDa |
| Formulation | Rabbit IgG in phosphate buffered saline , pH 7.4, 150mM NaCl, 0.02% sodium azide and 50% glycerol. |
| Storage | Store at +4 Λ C short term. Store at -20 Λ C long term. Avoid freeze / thaw cycle. |

Application Details

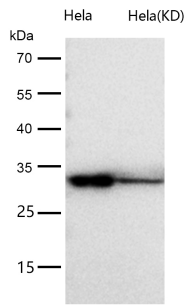
WB:1:500~1:2000IHC:1:50~1:200ICC/IF:1:50~1:200IP:1:50FC:1:50

Images



Western blot analysis of CLIC4 expression in 293 cell lysate.

All lanes use the Antibody at 1:1K dilution for 1 hour at room temperature.



Product Description

Can insert into membranes and form poorly selective ion channels that may also transport chloride ions. Channel activity depends on the pH. Membrane insertion seems to be redox-regulated and may occur only under oxidizing conditions. Promotes cell-surface expression of HRH3. Has alternate cellular functions like a potential role in angiogenesis or in maintaining apical-basolateral membrane polarity during mitosis and cytokinesis. Could also promote endothelial cell proliferation and regulate endothelial morphogenesis (tubulogenesis).

Note: This product is for in vitro research use only