

TAOK1 Rabbit mAb

Catalog No: #57119

Package Size: #57119-1 50ul #57119-2 100ul

Orders: order@signalwayantibody.com

Support: tech@signalwayantibody.com

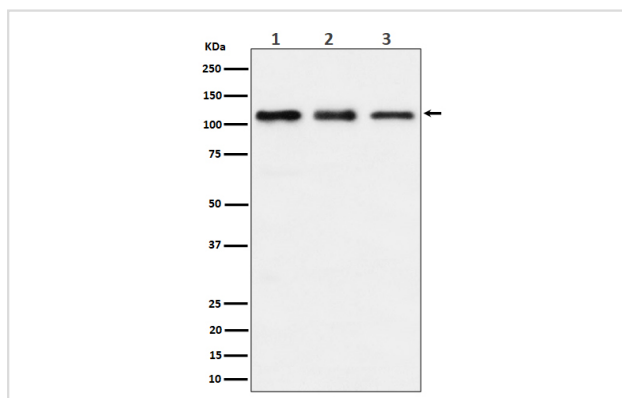
Description

Product Name	TAOK1 Rabbit mAb
Host Species	Rabbit
Clonality	Monoclonal
Isotype	Rabbit IgG
Purification	Affinity-chromatography
Applications	WB
Species Reactivity	Human Mouse Rat
Specificity	TAOK1 Antibody detects endogenous levels of total TAOK1
Immunogen Description	A synthesized peptide derived from human TAOK1
Other Names	hKFC B; MAP3K16; MARK kinase; MARKK; PSK2; STE20 like kinase; Taok1;
Accession No.	Uniprot:Q7L7X3
Uniprot	Q7L7X3
Calculated MW	116kDa
Formulation	Rabbit IgG in phosphate buffered saline , pH 7.4, 150mM NaCl, 0.02% sodium azide and 50% glycerol.
Storage	Store at +4 Λ C short term. Store at -20 Λ C long term. Avoid freeze / thaw cycle.

Application Details

WB: 1:500~1:2000

Images



Western blot analysis of TAOK1 expression in (1) HeLa cell lysate; (2) RAW 264.7 cell lysate; (3) C6 cell lysate.

Product Description

Phosphorylates MKK3 (By similarity). Activates the p38 MAP kinase pathway through the specific activation of the upstream MKK3 kinase.

Note: This product is for in vitro research use only