

Homer1 Rabbit mAb

Catalog No: #57122

Package Size: #57122-1 50ul #57122-2 100ul

Orders: order@signalwayantibody.com

Support: tech@signalwayantibody.com

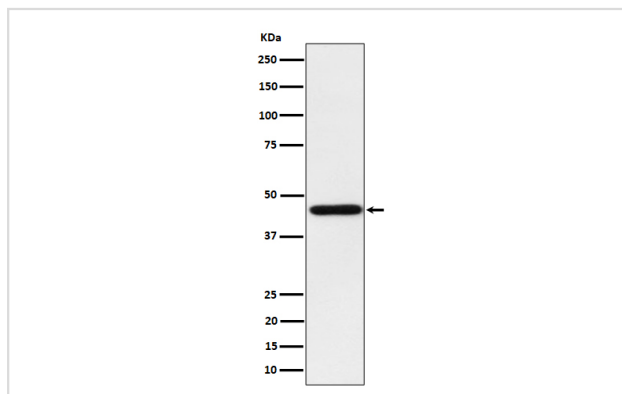
Description

Product Name	Homer1 Rabbit mAb
Host Species	Rabbit
Clonality	Monoclonal
Isotype	Rabbit IgG
Purification	Affinity-chromatography
Applications	WB IHC IP
Species Reactivity	Human Mouse Rat
Specificity	Homer1 Antibody detects endogenous levels of total Homer1
Immunogen Description	A synthesized peptide derived from human Homer1
Other Names	Homer; HOMER 1A; HOMER 1B; HOMER 1C; homer homolog 1; Homer1; HOMER1A; HOMER1B; HOMER1C; SYN47;
Accession No.	Uniprot:Q86YM7
Uniprot	Q86YM7
Calculated MW	45kDa
Formulation	Rabbit IgG in phosphate buffered saline , pH 7.4, 150mM NaCl, 0.02% sodium azide and 50% glycerol.
Storage	Store at +4 Λ C short term. Store at -20 Λ C long term. Avoid freeze / thaw cycle.

Application Details

WB:1:500~1:2000IHC:1:50~1:200IP:1:50

Images



Western blot analysis of Homer1 expression in HepG2 cell lysate.

Product Description

Postsynaptic density scaffolding protein. Binds and cross-links cytoplasmic regions of GRM1, GRM5, ITPR1, DNM3, RYR1, RYR2, SHANK1 and SHANK3. By physically linking GRM1 and GRM5 with ER-associated ITPR1 receptors, it aids the coupling of surface receptors to intracellular calcium release.

Note: This product is for in vitro research use only