

## NDUFS2 Rabbit mAb

Catalog No: #57126

Package Size: #57126-1 50ul #57126-2 100ul

Orders: order@signalwayantibody.com

Support: tech@signalwayantibody.com

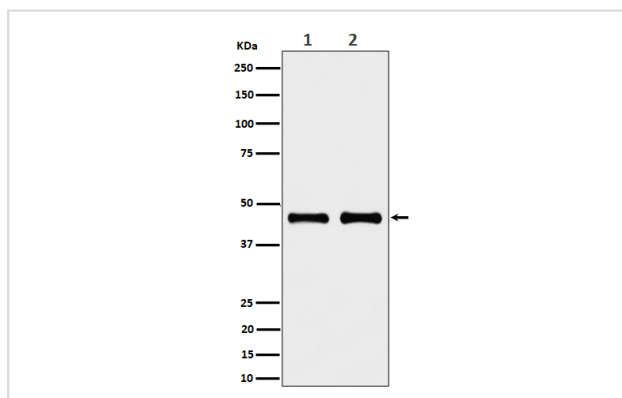
## Description

Product Name	NDUFS2 Rabbit mAb
Host Species	Rabbit
Clonality	Monoclonal
Isotype	Rabbit IgG
Purification	Affinity-chromatography
Applications	WB IHC IP
Species Reactivity	Human Mouse Rat
Specificity	NDUFS2 Antibody detects endogenous levels of total NDUFS2
Immunogen Description	A synthesized peptide derived from human NDUFS2
Other Names	Ndufs2;
Accession No.	Uniprot:O75306
Uniprot	O75306
Calculated MW	45kDa
Formulation	Rabbit IgG in phosphate buffered saline , pH 7.4, 150mM NaCl, 0.02% sodium azide and 50% glycerol.
Storage	Store at +4Λ C short term. Store at -20Λ C long term. Avoid freeze / thaw cycle.

## Application Details

WB:1:500~1:2000IHC:1:50~1:200IP:1:50

## Images



Western blot analysis of NDUFS2 expression in (1) HeLa cell lysate; (2) RAW264.7 HeLa cell lysate.

## Product Description

Core subunit of the mitochondrial membrane respiratory chain NADH dehydrogenase (Complex I) that is believed to belong to the minimal assembly required for catalysis. Complex I functions in the transfer of electrons from NADH to the respiratory chain. The immediate electron acceptor for the enzyme is believed to be ubiquinone.

---

Note: This product is for in vitro research use only