

PR Polyclonal Antibody

Catalog No: #44262

Package Size: #44262-1 50ul #44262-2 100ul

Orders: order@signalwayantibody.comSupport: tech@signalwayantibody.com

Description

Product Name	PR Polyclonal Antibody
Host Species	Rabbit
Clonality	Polyclonal
Isotype	IgG
Purification	The antibody was affinity-purified from rabbit antiserum by affinity-chromatography using epitope-specific immunogen.
Applications	WB;IHC;IF/ICC;ELISA
Species Reactivity	Human; Mouse;Rat
Specificity	PR Polyclonal Antibody detects endogenous levels of PR protein.
Immunogen Description	The antiserum was produced against synthesized peptide derived from human Progesterone Receptor.
Accession No.	Swiss Prot:P06401GeneID:5241
Calculated MW	99kD
Concentration	1 mg/ml
Formulation	Liquid in PBS containing 50% glycerol, 0.5% BSA and 0.02% sodium azide.
Storage	Store at -20°C/1 year

Application Details

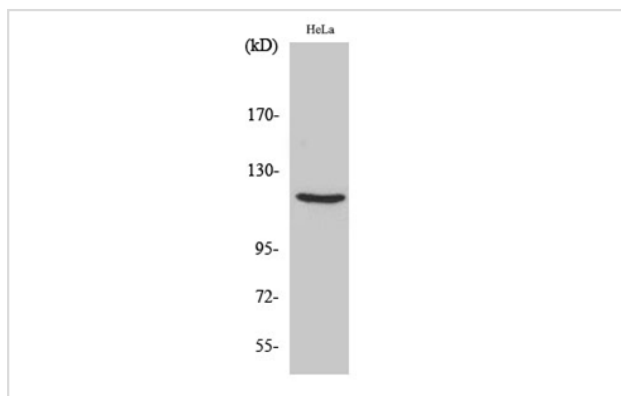
Western Blot: 1/500 - 1/2000.

Immunohistochemistry: 1/100 - 1/300.

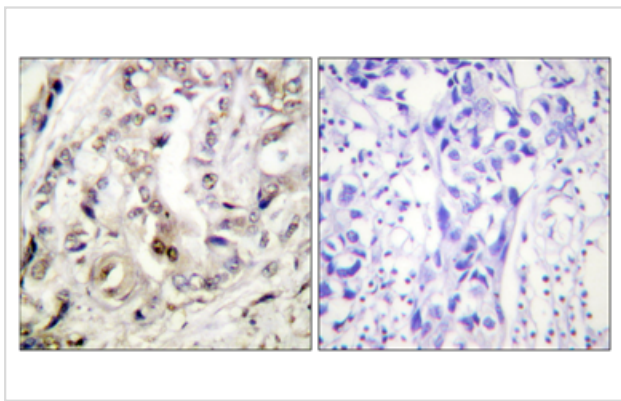
Immunofluorescence: 1/200 - 1/1000.

ELISA: 1/5000.

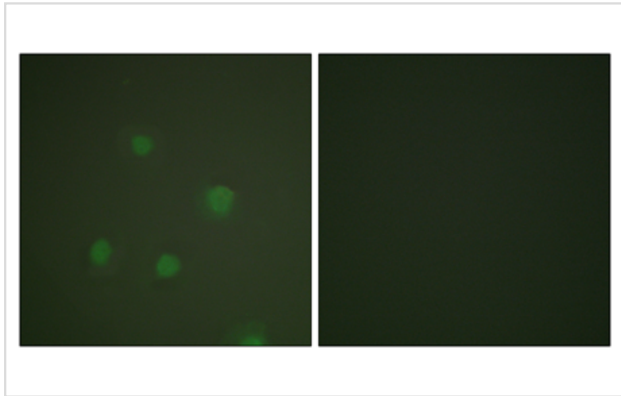
Images



Western Blot analysis of various cells using PR Polyclonal Antibody



Immunohistochemistry analysis of paraffin-embedded human breast carcinoma tissue, using Progesterone Receptor Antibody. The picture on the right is blocked with the synthesized peptide.



Immunofluorescence analysis of A549 cells, using Progesterone Receptor Antibody.

Note: This product is for in vitro research use only