

AS160 (Phospho-Thr642) Rabbit mAb

Catalog No: #14291

Package Size: #14291-1 50ul #14291-2 100ul

Orders: order@signalwayantibody.com

Support: tech@signalwayantibody.com

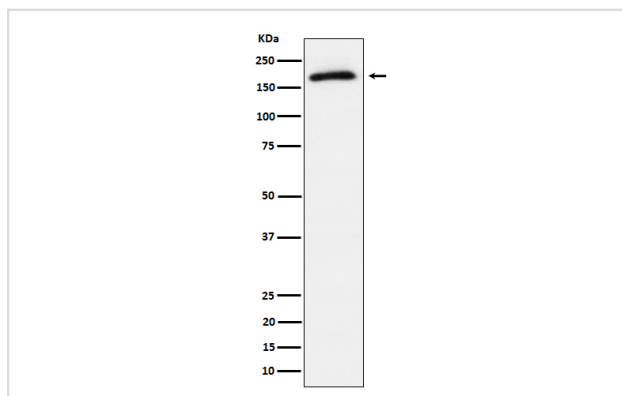
Description

Product Name	AS160 (Phospho-Thr642) Rabbit mAb
Host Species	Rabbit
Clonality	Polyclonal
Isotype	Rabbit IgG
Purification	Affinity-chromatography
Applications	WB
Species Reactivity	Human
Specificity	Phospho-AS160 (T642) Antibody detects endogenous levels of total Phospho-AS160 (T642)
Immunogen Description	A synthesized peptide derived from human Phospho-AS160 (T642)
Accession No.	O60343
Calculated MW	180kDa
Formulation	Rabbit IgG in phosphate buffered saline , pH 7.4, 150mM NaCl, 0.02% sodium azide and 50% glycerol.
Storage	Store at -20°C for long term preservation (recommended). Store at 4°C for short term use.

Application Details

WB 1:500~1:2000

Images



Western blot analysis of Phospho-AS160 (T642) expression in 293T treated with insulin cell lysate.

Background

May act as a GTPase-activating protein for RAB2A, RAB8A, RAB10 and RAB14. Isoform 2 promotes insulin-induced glucose transporter SLC2A4/GLUT4 translocation at the plasma membrane, thus increasing glucose uptake.

Note: This product is for in vitro research use only