

## EGFR (Phospho-Tyr845) Rabbit mAb

Catalog No: #14294

Package Size: #14294-1 50ul #14294-2 100ul

Orders: order@signalwayantibody.com

Support: tech@signalwayantibody.com

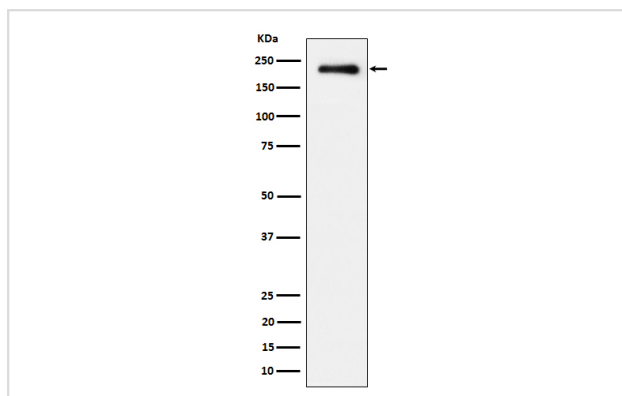
## Description

Product Name	EGFR (Phospho-Tyr845) Rabbit mAb
Host Species	Rabbit
Clonality	Monoclonal
Isotype	Rabbit IgG
Purification	Affinity-chromatography
Applications	WB, ICC/IF
Species Reactivity	Human
Specificity	Phospho-EGFR (Y845) Antibody detects endogenous levels of total Phospho-EGFR (Y845)
Immunogen Description	A synthesized peptide derived from human Phospho-EGFR (Y845)
Other Names	EGFR; ERBB; ERBB1; Errp; HER1; mENA; NISBD2; PIG61; SA7; wa2; Wa5;
Accession No.	P00533
Calculated MW	175kDa
Formulation	Rabbit IgG in phosphate buffered saline , pH 7.4, 150mM NaCl, 0.02% sodium azide and 50% glycerol.
Storage	Store at -20°C for long term preservation (recommended). Store at 4°C for short term use.

## Application Details

WB 1:500~1:2000 ICC/IF 1:50~1:200

## Images



Western blot analysis of Phospho-EGFR (Y845) expression in A431 treated with EGF cell lysate.

## Background

Receptor tyrosine kinase binding ligands of the EGF family and activating several signaling cascades to convert extracellular cues into appropriate cellular responses.

---

Note: This product is for in vitro research use only