

## Phospho-MCU(S92) Antibody

Catalog No: #14297

Package Size: #14297-1 50ul #14297-2 100ul

Orders: order@signalwayantibody.com

Support: tech@signalwayantibody.com

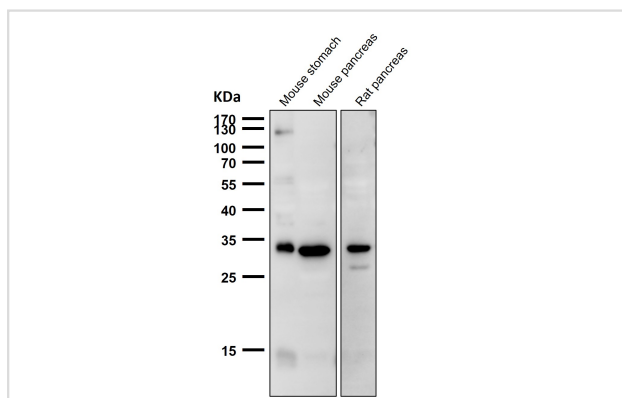
## Description

Product Name	Phospho-MCU(S92) Antibody
Host Species	Rabbit
Clonality	Polyclonal
Isotype	IgG
Purification	Affinity-chromatography
Applications	WB,IHC,ICC/IF
Species Reactivity	Human Mouse Rat
Specificity	Phospho-MCU(S92) Antibody detects endogenous levels of total Phospho-MCU(S92)
Immunogen Description	A synthesized peptide derived from human Phospho-MCU(S92)
Other Names	C10orf42; Calcium uniporter protein mitochondrial; Ccdc109a; HsMCU; Mitochondrial Calcium Uniporter;
Accession No.	Q8NE86
Calculated MW	30kDa
Concentration	2mg/ml
Formulation	Rabbit IgG in phosphate buffered saline , pH 7.4, 150mM NaCl, 0.02% sodium azide and 50% glycerol.
Storage	Store at -20°C for long term preservation (recommended). Store at 4°C for short term use.

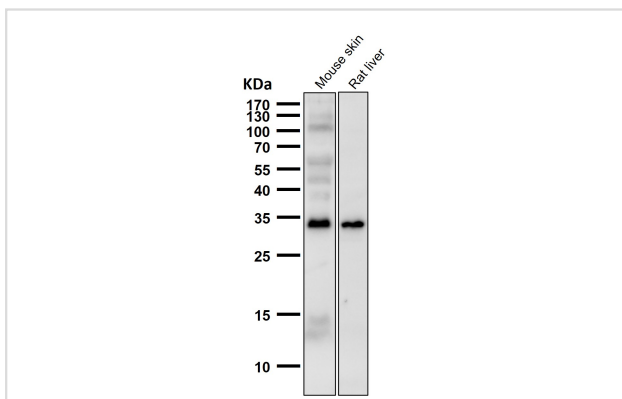
## Application Details

WB 1:500~1:2000 IHC 1:50~1:200 ICC/IF 1:50~1:200

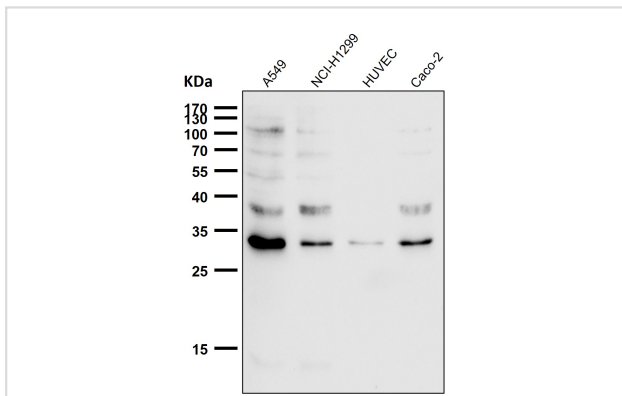
## Images



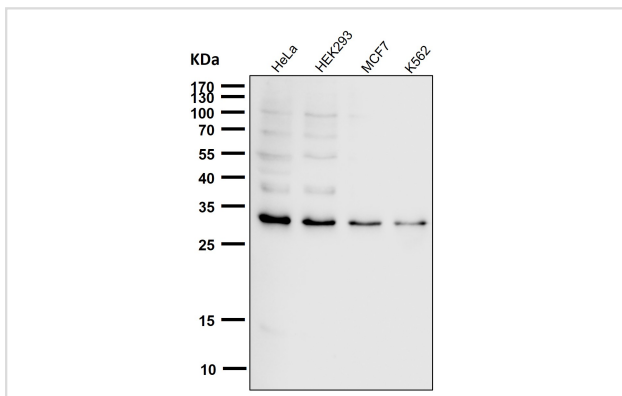
All lanes use the Antibody at 1:1K dilution for 1 hour at room temperature.



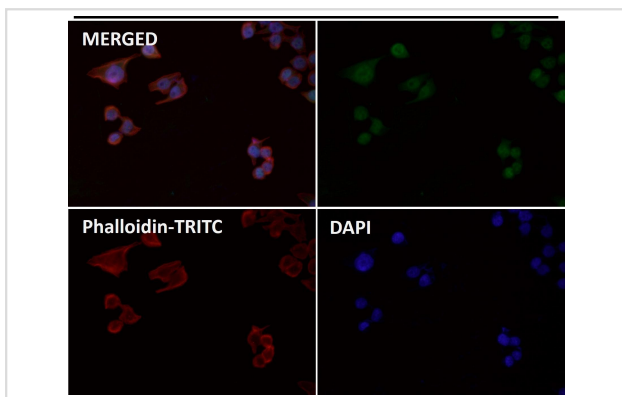
All lanes use the Antibody at 1:1K dilution for 1 hour at room temperature.



All lanes use the Antibody at 1:1K dilution for 1 hour at room temperature.



All lanes use the Antibody at 1:1K dilution for 1 hour at room temperature.



Immunofluorescent analysis using the Antibody at 1:150 dilution.

## Background

Mitochondrial inner membrane calcium uniporter that mediates calcium uptake into mitochondria (PubMed:21685888, PubMed:21685886, PubMed:23101630, PubMed:22904319, PubMed:23178883, PubMed:22829870, PubMed:22822213, PubMed:24332854, PubMed:23755363, PubMed:26341627).

---

Note: This product is for in vitro research use only