

RIP3 (Phospho-Ser232) Rabbit mAb

Catalog No: #14299

Package Size: #14299-1 50ul #14299-2 100ul

Orders: order@signalwayantibody.com

Support: tech@signalwayantibody.com

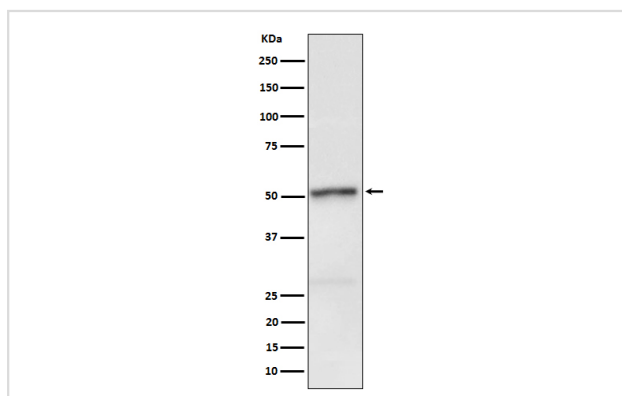
Description

Product Name	RIP3 (Phospho-Ser232) Rabbit mAb
Host Species	Rabbit
Clonality	Monoclonal
Isotype	Rabbit IgG
Purification	Affinity-chromatography
Applications	WB
Species Reactivity	Mouse
Specificity	Phospho-RIP3 (S232) Antibody detects endogenous levels of total Phospho-RIP3 (S232)
Immunogen Description	A synthesized peptide derived from human Phospho-RIP3 (S232)
Other Names	Receptor interacting protein 3; Receptor interacting serine threonine kinase 3; Receptor interacting serine/threonine protein kinase 3; Receptor-interacting serine/threonine-protein kinase 3; RIP like protein kinase 3; RIP-3;RIP-like protein kinase 3;
Accession No.	Q9Y572/Q9QZL0
Calculated MW	50kDa
Formulation	Rabbit IgG in phosphate buffered saline , pH 7.4, 150mM NaCl, 0.02% sodium azide and 50% glycerol.
Storage	Store at -20°C for long term preservation (recommended). Store at 4°C for short term use.

Application Details

WB 1:500~1:2000

Images



Western blot analysis of Phospho-RIP3 (S232) expression in L929 cell lysate.

Background

Promotes apoptosis.

Note: This product is for in vitro research use only