

PSIP1 / LEDGF Rabbit mAb

Catalog No: #57139

Package Size: #57139-1 50ul #57139-2 100ul

Orders: order@signalwayantibody.com

Support: tech@signalwayantibody.com

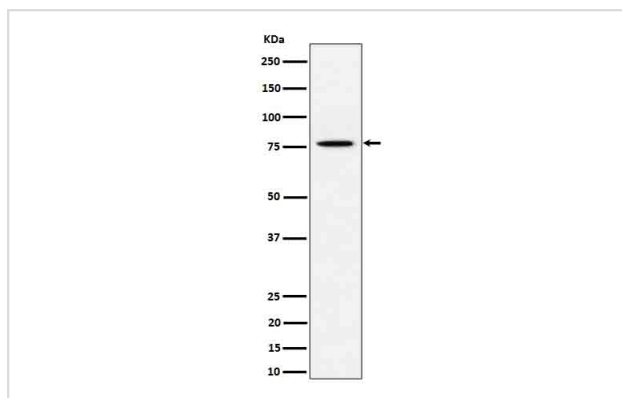
Description

Product Name	PSIP1 / LEDGF Rabbit mAb
Host Species	Rabbit
Clonality	Monoclonal
Isotype	Rabbit IgG
Purification	Affinity-chromatography
Applications	WB IHC ICC/IF
Species Reactivity	Human
Specificity	PSIP1 / LEDGF Antibody detects endogenous levels of total PSIP1 / LEDGF
Immunogen Description	A synthesized peptide derived from human PSIP1 / LEDGF
Other Names	DFS70; LEDGF; p52; p75; PAIP; Psp1; PSIP2;
Accession No.	O75475
Calculated MW	75kDa
Formulation	Rabbit IgG in phosphate buffered saline , pH 7.4, 150mM NaCl, 0.02% sodium azide and 50% glycerol.
Storage	Store at -20°C for long term preservation (recommended). Store at 4°C for short term use.

Application Details

WB 1:500~1:2000 IHC 1:50~1:200 ICC/IF 1:50~1:200

Images



Western blot analysis of PSIP1 / LEDGF expression in HeLa cell lysate.

Background

Transcriptional coactivator involved in neuroepithelial stem cell differentiation and neurogenesis. Involved in particular in lens epithelial cell gene regulation and stress responses.

Note: This product is for in vitro research use only