

## HSPC150 Rabbit mAb

Catalog No: #57147

Package Size: #57147-1 50ul #57147-2 100ul

Orders: [order@signalwayantibody.com](mailto:order@signalwayantibody.com)Support: [tech@signalwayantibody.com](mailto:tech@signalwayantibody.com)

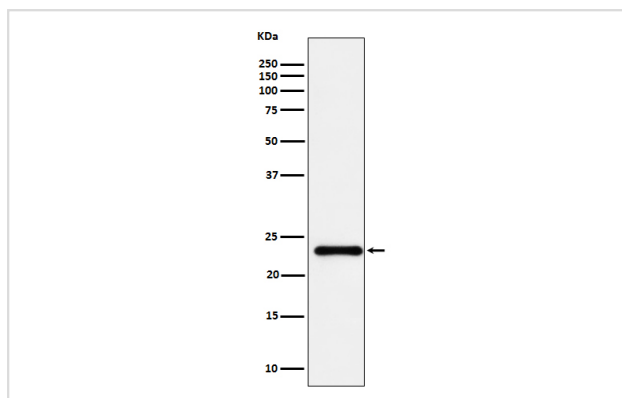
## Description

Product Name	HSPC150 Rabbit mAb
Host Species	Rabbit
Clonality	Monoclonal
Isotype	Rabbit IgG
Purification	Affinity-chromatography
Applications	WB
Species Reactivity	Human
Specificity	HSPC150 Antibody detects endogenous levels of total HSPC150
Immunogen Description	A synthesized peptide derived from human HSPC150
Other Names	HSPC150; PIG50; Ube2t;
Accession No.	Q9NPD8
Calculated MW	23kDa
Formulation	Rabbit IgG in phosphate buffered saline , pH 7.4, 150mM NaCl, 0.02% sodium azide and 50% glycerol.
Storage	Store at -20°C for long term preservation (recommended). Store at 4°C for short term use.

## Application Details

WB 1:500~1:2000

## Images



Western blot analysis of HSPC150 expression in HeLa cell lysate.

## Background

Accepts ubiquitin from the E1 complex and catalyzes its covalent attachment to other proteins. In vitro able to catalyze polyubiquitination using all 7 ubiquitin Lys residues, but may prefer 'Lys-11', 'Lys-27', 'Lys-48' and 'Lys-63'-linked polyubiquitination.

---

Note: This product is for in vitro research use only