

EXOC2 Rabbit mAb

Catalog No: #57149

Package Size: #57149-1 50ul #57149-2 100ul

Orders: order@signalwayantibody.com

Support: tech@signalwayantibody.com

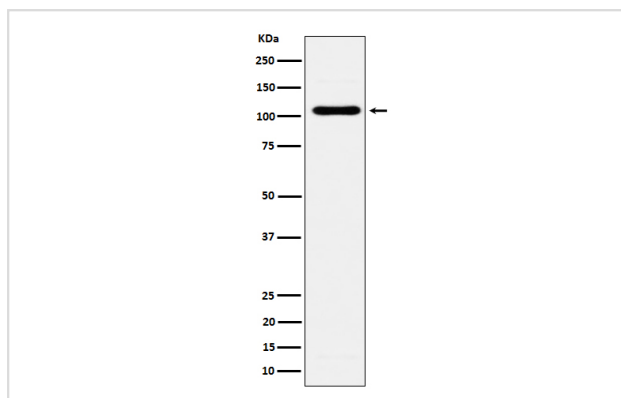
Description

Product Name	EXOC2 Rabbit mAb
Host Species	Rabbit
Clonality	Monoclonal
Isotype	Rabbit IgG
Purification	Affinity-chromatography
Applications	WB
Species Reactivity	Human Mouse Rat
Specificity	EXOC2 Antibody detects endogenous levels of total EXOC2
Immunogen Description	A synthesized peptide derived from human EXOC2
Other Names	EXOC2; SEC5; SEC5L1; Sec5p;
Accession No.	Q96KP1
Calculated MW	104kDa
Formulation	Rabbit IgG in phosphate buffered saline , pH 7.4, 150mM NaCl, 0.02% sodium azide and 50% glycerol.
Storage	Store at -20°C for long term preservation (recommended). Store at 4°C for short term use.

Application Details

WB 1:500~1:2000

Images



Western blot analysis of EXOC2 expression in BxPC-3 cell lysate.

Background

Component of the exocyst complex involved in the docking of exocytic vesicles with fusion sites on the plasma membrane.

Note: This product is for in vitro research use only