

## DUT Rabbit mAb

Catalog No: #57151

Package Size: #57151-1 50ul #57151-2 100ul

Orders: order@signalwayantibody.com

Support: tech@signalwayantibody.com

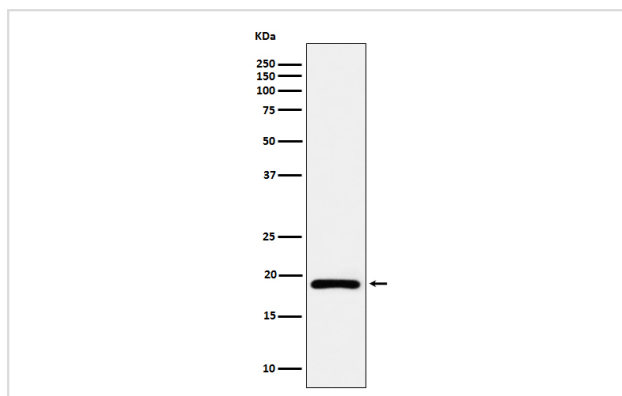
## Description

Product Name	DUT Rabbit mAb
Host Species	Rabbit
Clonality	Monoclonal
Isotype	Rabbit IgG
Purification	Affinity-chromatography
Applications	WB ICC/IF FC
Species Reactivity	Human
Specificity	DUT Antibody detects endogenous levels of total DUT
Immunogen Description	A synthesized peptide derived from human DUT
Other Names	dut; dUTP nucleotidohydrolase; dUTP pyrophosphatase; dUTPase;
Accession No.	P33316
Calculated MW	18kDa
Formulation	Rabbit IgG in phosphate buffered saline , pH 7.4, 150mM NaCl, 0.02% sodium azide and 50% glycerol.
Storage	Store at -20°C for long term preservation (recommended). Store at 4°C for short term use.

## Application Details

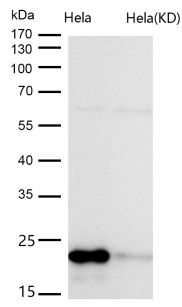
WB 1:500~1:2000 ICC/IF 1:50~1:200 FC 1:50

## Images



Western blot analysis of DUT expression in Ramos cell lysate.

All lanes use the Antibody at 1:1K dilution for 1 hour at room temperature.



## Background

This enzyme is involved in nucleotide metabolism: it produces dUMP, the immediate precursor of thymidine nucleotides and it decreases the intracellular concentration of dUTP so that uracil cannot be incorporated into DNA.

Note: This product is for in vitro research use only