

## PTBP2 Rabbit mAb

Catalog No: #57155

Package Size: #57155-1 50ul #57155-2 100ul

Orders: order@signalwayantibody.com

Support: tech@signalwayantibody.com

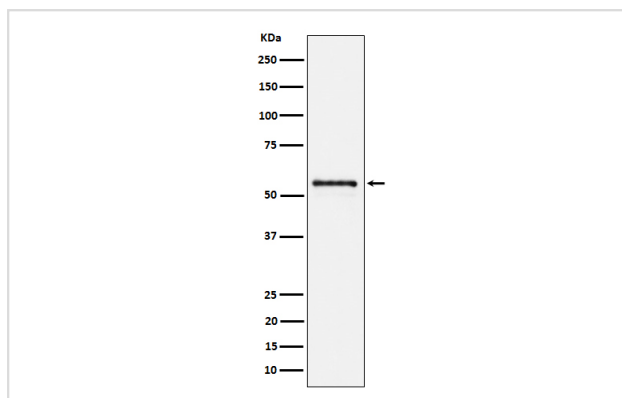
## Description

|                       |  |
|-----------------------|--|
| Product Name          | PTBP2 Rabbit mAb   |
| Host Species          | Rabbit   |
| Clonality             | Monoclonal   |
| Isotype               | Rabbit IgG   |
| Purification          | Affinity-chromatography  |
| Applications          | WB   |
| Species Reactivity    | Human Mouse Rat  |
| Specificity           | PTBP2 Antibody detects endogenous levels of total PTBP2  |
| Immunogen Description | A synthesized peptide derived from human PTBP2   |
| Other Names           | MIBP; nPTB; nPTB5; nPTB6; nPTB7; nPTB8; PTB; PTBLP; Ptbp2;   |
| Accession No.         | Q9UKA9   |
| Calculated MW         | 55kDa  |
| Formulation           | Rabbit IgG in phosphate buffered saline , pH 7.4, 150mM NaCl, 0.02% sodium azide and 50% glycerol. |
| Storage               | Store at -20°C for long term preservation (recommended). Store at 4°C for short term use.          |

## Application Details

WB 1:500~1:2000

## Images



Western blot analysis of PTBP2 expression in Neuro2a cell lysate.

## Background

RNA-binding protein which binds to intronic polypyrimidine tracts and mediates negative regulation of exons splicing.

---

Note: This product is for in vitro research use only