

Desmocollin 1 Rabbit mAb

Catalog No: #57157

Package Size: #57157-1 50ul #57157-2 100ul

Orders: order@signalwayantibody.com

Support: tech@signalwayantibody.com

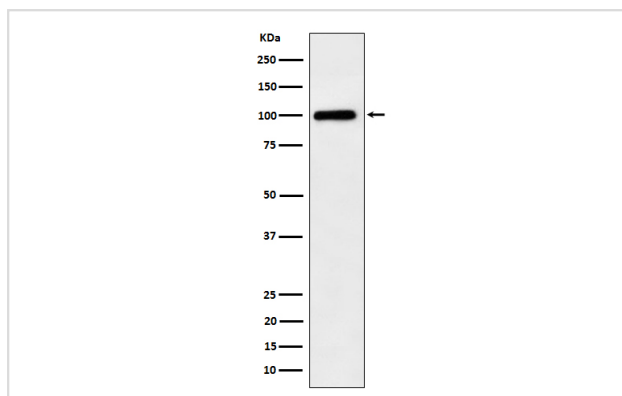
Description

Product Name	Desmocollin 1 Rabbit mAb
Host Species	Rabbit
Clonality	Monoclonal
Isotype	Rabbit IgG
Purification	Affinity-chromatography
Applications	WB
Species Reactivity	Human Mouse Rat
Specificity	Desmocollin 1 Antibody detects endogenous levels of total Desmocollin 1
Immunogen Description	A synthesized peptide derived from human Desmocollin 1
Other Names	CDHF1; DG2/DG3; DSC1;
Accession No.	Q08554
Calculated MW	100kDa
Formulation	Rabbit IgG in phosphate buffered saline , pH 7.4, 150mM NaCl, 0.02% sodium azide and 50% glycerol.
Storage	Store at -20°C for long term preservation (recommended). Store at 4°C for short term use.

Application Details

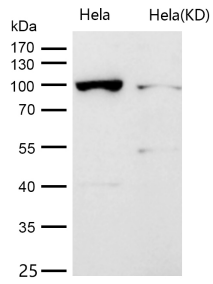
WB 1:500~1:2000

Images



Western blot analysis of Desmocollin 1 expression in A375 cell lysate.

All lanes use the Antibody at 1:1K dilution for 1 hour at room temperature.



Background

Desmocollin 1 is a component of intercellular desmosome junctions. It is involved in the interaction of plaque proteins and intermediate filaments mediating cell-cell adhesion.

Note: This product is for in vitro research use only