

CD223 Rabbit mAb

Catalog No: #57166

Package Size: #57166-1 50ul #57166-2 100ul

Orders: order@signalwayantibody.comSupport: tech@signalwayantibody.com

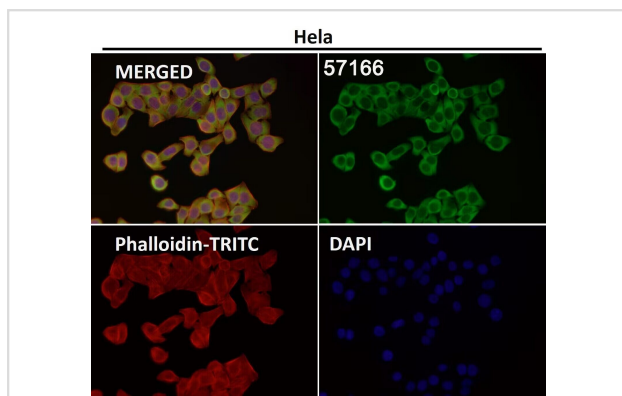
Description

Product Name	CD223 Rabbit mAb
Host Species	Rabbit
Clonality	Monoclonal
Isotype	IgG
Purification	Affinity-chromatography
Applications	IHC
Species Reactivity	Human
Specificity	CD223 Antibody detects endogenous levels of total CD223
Other Names	CD223; Lag3; Lymphocyte activating 3; Protein FDC;
Accession No.	P18627
Calculated MW	60-80kDa
Concentration	1 mg/ml
Formulation	Rabbit IgG in phosphate buffered saline , pH 7.4, 150mM NaCl, 0.02% sodium azide and 50% glycerol.
Storage	Store at -20°C for long term preservation (recommended). Store at 4°C for short term use.

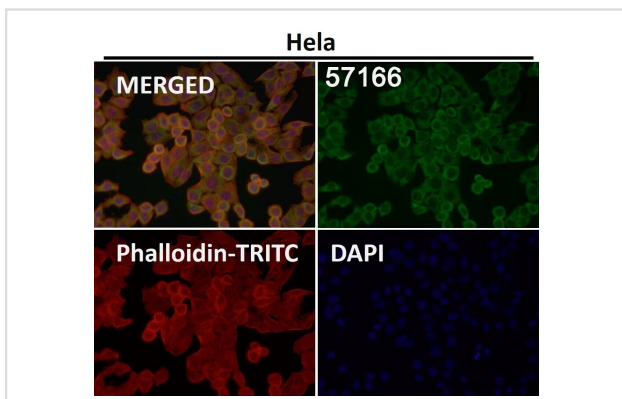
Application Details

IHC 1:50~1:200

Images



Immunofluorescent analysis using the Antibody at 1:50 dilution.



Immunofluorescent analysis using the Antibody at 1:150 dilution.

Background

Involved in lymphocyte activation. Binds to HLA class-II antigens.

Note: This product is for in vitro research use only