

## MAPKAPK-2 Polyclonal Antibody

Catalog No: #33196

Package Size: #33196-1 50ul #33196-2 100ul

Orders: [order@signalwayantibody.com](mailto:order@signalwayantibody.com)Support: [tech@signalwayantibody.com](mailto:tech@signalwayantibody.com)

## Description

Product Name	MAPKAPK-2 Polyclonal Antibody
Host Species	Rabbit
Clonality	Polyclonal
Isotype	IgG
Purification	The antibody was affinity-purified from rabbit antiserum by affinity-chromatography using epitope-specific immunogen.
Applications	WB;IHC;IF;ELISA
Species Reactivity	Human;Mouse;Rat;Monkey
Specificity	MAPKAPK-2 Polyclonal Antibody detects endogenous levels of MAPKAPK-2 protein.
Immunogen Description	The antiserum was produced against synthesized peptide derived from human MAPKAPK2.
Accession No.	Swiss Prot:P49137GeneID:9261
Uniprot	P49137
GeneID	9261
Calculated MW	46kD
Concentration	1 mg/ml
Formulation	Liquid in PBS containing 50% glycerol, 0.5% BSA and 0.02% sodium azide.
Storage	Store at -20°C/1 year

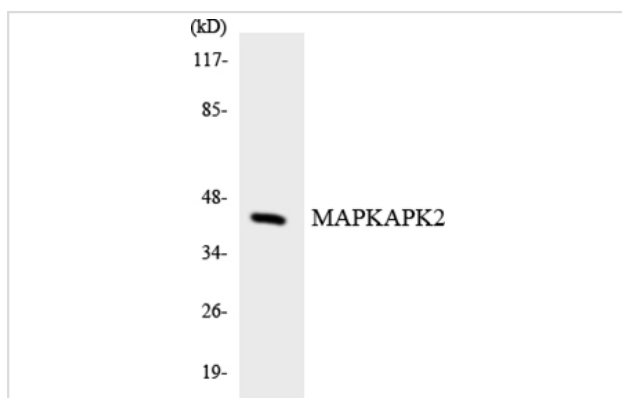
## Application Details

Western Blot: 1/500 - 1/2000.

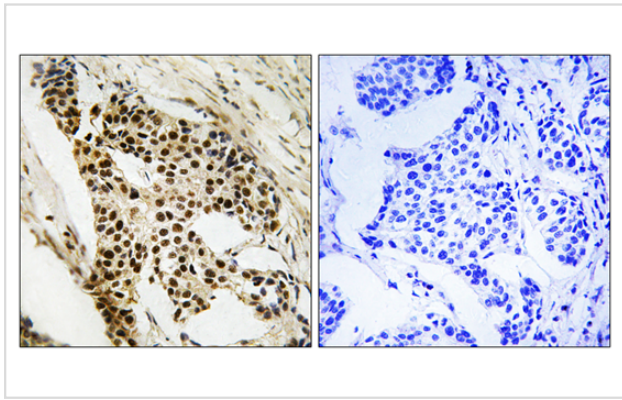
Immunohistochemistry: 1/100 - 1/300.

ELISA: 1/5000.

## Images



Western blot analysis of the lysates from HeLa cells using MAPKAPK2 antibody.



Immunohistochemistry analysis of paraffin-embedded human breast carcinoma tissue, using MAPKAPK2 Antibody.

---

Note: This product is for in vitro research use only